

**MPHOSPH6 Antibody (N-term)**  
**Affinity Purified Rabbit Polyclonal Antibody (Pab)**  
**Catalog # AP16438a**

**Specification**

---

**MPHOSPH6 Antibody (N-term) - Product Information**

Application	WB,E
Primary Accession	<a href="#">Q99547</a>
Other Accession	<a href="#">NP_005783.2</a>
Reactivity	Human
Host	Rabbit
Clonality	Polyclonal
Isotype	Rabbit IgG
Calculated MW	19024
Antigen Region	1-30

**MPHOSPH6 Antibody (N-term) - Additional Information**

**Gene ID** 10200

**Other Names**

M-phase phosphoprotein 6, MPHOSPH6, MPP6

**Target/Specificity**

This MPHOSPH6 antibody is generated from rabbits immunized with a KLH conjugated synthetic peptide between 1-30 amino acids from the N-terminal region of human MPHOSPH6.

**Dilution**

WB~~1:1000

E~~Use at an assay dependent concentration.

**Format**

Purified polyclonal antibody supplied in PBS with 0.09% (W/V) sodium azide. This antibody is purified through a protein A column, followed by peptide affinity purification.

**Storage**

Maintain refrigerated at 2-8°C for up to 2 weeks. For long term storage store at -20°C in small aliquots to prevent freeze-thaw cycles.

**Precautions**

MPHOSPH6 Antibody (N-term) is for research use only and not for use in diagnostic or therapeutic procedures.

**MPHOSPH6 Antibody (N-term) - Protein Information**

**Name** MPHOSPH6 ([HGNC:7214](#))

**Function** RNA-binding protein that associates with the RNA exosome complex. Involved in the

3'-processing of the 7S pre-rRNA to the mature 5.8S rRNA and play a role in recruiting the RNA exosome complex to pre- rRNA; this function may include C1D.

#### **Cellular Location**

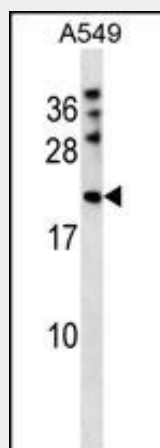
Nucleus, nucleolus. Cytoplasm. Note=Cytoplasmic in M phase

#### **MPHOSPH6 Antibody (N-term) - Protocols**

Provided below are standard protocols that you may find useful for product applications.

- [Western Blot](#)
- [Blocking Peptides](#)
- [Dot Blot](#)
- [Immunohistochemistry](#)
- [Immunofluorescence](#)
- [Immunoprecipitation](#)
- [Flow Cytometry](#)
- [Cell Culture](#)

#### **MPHOSPH6 Antibody (N-term) - Images**



MPHOSPH6 Antibody (N-term) (Cat. #AP16438a) western blot analysis in A549 cell line lysates (35ug/lane). This demonstrates the MPHOSPH6 antibody detected the MPHOSPH6 protein (arrow).

#### **MPHOSPH6 Antibody (N-term) - Background**

Progression of cells from interphase to mitosis involves alterations in cell structures and activities. The transition from G2 to M phase is induced by M phase promoting factor, or MPF. In M phase, many proteins are phosphorylated directly by MPF or indirectly by kinases activated by MPF. These M phase phosphoproteins (MPPs, or MPHOSPHs) permit disassembly of interphase structures and generation of M phase enzymatic activities and structures.

#### **MPHOSPH6 Antibody (N-term) - References**

Rose, J.E., et al. Mol. Med. 16 (7-8), 247-253 (2010) :  
Need, A.C., et al. Hum. Mol. Genet. 18(23):4650-4661(2009)  
Org, E., et al. Hum. Mol. Genet. 18(12):2288-2296(2009)  
Sugiyama, N., et al. Mol. Cell Proteomics 6(6):1103-1109(2007)  
Lamesch, P., et al. Genomics 89(3):307-315(2007)