

PDS5A Antibody (C-term)
Affinity Purified Rabbit Polyclonal Antibody (Pab)
Catalog # AP16439b

Specification

PDS5A Antibody (C-term) - Product Information

| | |
|-------------------|---|
| Application | WB,E |
| Primary Accession | Q29RF7 |
| Other Accession | NP_001093869.1 , NP_001093870.1 |
| Reactivity | Human |
| Host | Rabbit |
| Clonality | Polyclonal |
| Isotype | Rabbit IgG |
| Calculated MW | 150830 |
| Antigen Region | 1309-1337 |

PDS5A Antibody (C-term) - Additional Information

Gene ID 23244

Other Names

Sister chromatid cohesion protein PDS5 homolog A, Cell proliferation-inducing gene 54 protein, Sister chromatid cohesion protein 112, SCC-112, PDS5A (http://www.genenames.org/cgi-bin/gene_symbol_report?hgnc_id=29088)
HGNC:29088

Target/Specificity

This PDS5A antibody is generated from rabbits immunized with a KLH conjugated synthetic peptide between 1309-1337 amino acids from the C-terminal region of human PDS5A.

Dilution

WB~~1:1000

E~~Use at an assay dependent concentration.

Format

Purified polyclonal antibody supplied in PBS with 0.09% (W/V) sodium azide. This antibody is purified through a protein A column, followed by peptide affinity purification.

Storage

Maintain refrigerated at 2-8°C for up to 2 weeks. For long term storage store at -20°C in small aliquots to prevent freeze-thaw cycles.

Precautions

PDS5A Antibody (C-term) is for research use only and not for use in diagnostic or therapeutic procedures.

PDS5A Antibody (C-term) - Protein Information

Name PDS5A ([HGNC:29088](#))

Function Probable regulator of sister chromatid cohesion in mitosis which may stabilize cohesin complex association with chromatin. May couple sister chromatid cohesion during mitosis to DNA replication. Cohesion ensures that chromosome partitioning is accurate in both meiotic and mitotic cells and plays an important role in DNA repair.

Cellular Location

Nucleus. Note=Associated with chromatin through most of the cell cycle. Dissociates from chromatin in late prophase, reassociates during late telophase.

Tissue Location

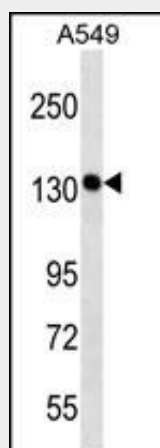
Highest level in colon. Low levels in lung, ovary, breast and kidney. Reduced level in renal tumor tissue. Isoform 2 is expressed in kidney.

PDS5A Antibody (C-term) - Protocols

Provided below are standard protocols that you may find useful for product applications.

- [Western Blot](#)
- [Blocking Peptides](#)
- [Dot Blot](#)
- [Immunohistochemistry](#)
- [Immunofluorescence](#)
- [Immunoprecipitation](#)
- [Flow Cytometry](#)
- [Cell Culture](#)

PDS5A Antibody (C-term) - Images



PDS5A Antibody (C-term) (Cat. #AP16439b) western blot analysis in A549 cell line lysates (35ug/lane). This demonstrates the PDS5A antibody detected the PDS5A protein (arrow).

PDS5A Antibody (C-term) - Background

PDS5A may contribute to regulation of sister chromatid cohesion during mitosis.