

RBMS2 Antibody (N-term)
Affinity Purified Rabbit Polyclonal Antibody (Pab)
Catalog # AP16446a**Specification**

RBMS2 Antibody (N-term) - Product Information

Application	WB,E
Primary Accession	Q15434
Other Accession	NP_002889.1
Reactivity	Human
Host	Rabbit
Clonality	Polyclonal
Isotype	Rabbit IgG
Calculated MW	43959
Antigen Region	1-30

RBMS2 Antibody (N-term) - Additional Information**Gene ID** 5939**Other Names**

RNA-binding motif, single-stranded-interacting protein 2, Suppressor of CDC2 with RNA-binding motif 3, RBMS2, SCR3

Target/Specificity

This RBMS2 antibody is generated from rabbits immunized with a KLH conjugated synthetic peptide between 1-30 amino acids from the N-terminal region of human RBMS2.

Dilution

WB~~1:1000

E~~Use at an assay dependent concentration.

Format

Purified polyclonal antibody supplied in PBS with 0.09% (W/V) sodium azide. This antibody is purified through a protein A column, followed by peptide affinity purification.

Storage

Maintain refrigerated at 2-8°C for up to 2 weeks. For long term storage store at -20°C in small aliquots to prevent freeze-thaw cycles.

Precautions

RBMS2 Antibody (N-term) is for research use only and not for use in diagnostic or therapeutic procedures.

RBMS2 Antibody (N-term) - Protein Information**Name** RBMS2

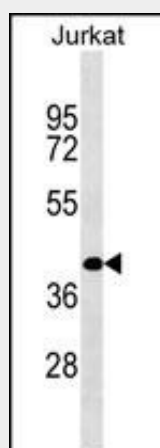
Synonyms SCR3**Cellular Location**

Nucleus.

RBMS2 Antibody (N-term) - Protocols

Provided below are standard protocols that you may find useful for product applications.

- [Western Blot](#)
- [Blocking Peptides](#)
- [Dot Blot](#)
- [Immunohistochemistry](#)
- [Immunofluorescence](#)
- [Immunoprecipitation](#)
- [Flow Cytometry](#)
- [Cell Culture](#)

RBMS2 Antibody (N-term) - Images

RBMS2 Antibody (N-term) (Cat. #AP16446a) western blot analysis in Jurkat cell line lysates (35ug/lane). This demonstrates the RBMS2 antibody detected the RBMS2 protein (arrow).

RBMS2 Antibody (N-term) - Background

RBMS2 is a member of a small family of proteins which bind single stranded DNA/RNA. These proteins are characterized by the presence of two sets of ribonucleoprotein consensus sequence (RNP-CS) that contain conserved motifs, RNP1 and RNP2, originally described in RNA binding proteins, and required for DNA binding. The RBMS proteins have been implicated in such diverse functions as DNA replication, gene transcription, cell cycle progression and apoptosis. This protein was isolated by phenotypic complementation of *cdc2* and *cdc13* mutants of yeast and is thought to suppress *cdc2* and *cdc13* mutants through the induction of translation of *cdc2*. [provided by RefSeq].

RBMS2 Antibody (N-term) - References

Kanaoka, Y., et al. Nucleic Acids Res. 22(13):2687-2693(1994)
Skerka, C., et al. J. Immunol. 148(10):3313-3318(1992)