

**DTX3L Antibody (Center)**  
**Affinity Purified Rabbit Polyclonal Antibody (Pab)**  
**Catalog # AP16451c****Specification**

---

**DTX3L Antibody (Center) - Product Information**

Application	WB,E
Primary Accession	<a href="#">Q8TDB6</a>
Other Accession	<a href="#">NP_612144.1</a>
Reactivity	Human
Host	Rabbit
Clonality	Polyclonal
Isotype	Rabbit IgG
Calculated MW	83554
Antigen Region	453-482

**DTX3L Antibody (Center) - Additional Information****Gene ID** 151636**Other Names**

E3 ubiquitin-protein ligase DTX3L, 632-, B-lymphoma- and BAL-associated protein, Protein deltex-3-like, Rhysin-2, Rhysin2, DTX3L, BBAP

**Target/Specificity**

This DTX3L antibody is generated from rabbits immunized with a KLH conjugated synthetic peptide between 453-482 amino acids from the Central region of human DTX3L.

**Dilution**

WB~~1:1000

E~~Use at an assay dependent concentration.

**Format**

Purified polyclonal antibody supplied in PBS with 0.09% (W/V) sodium azide. This antibody is purified through a protein A column, followed by peptide affinity purification.

**Storage**

Maintain refrigerated at 2-8°C for up to 2 weeks. For long term storage store at -20°C in small aliquots to prevent freeze-thaw cycles.

**Precautions**

DTX3L Antibody (Center) is for research use only and not for use in diagnostic or therapeutic procedures.

**DTX3L Antibody (Center) - Protein Information****Name** DTX3L

## Synonyms BBAP

**Function** E3 ubiquitin-protein ligase which, in association with ADP- ribosyltransferase PARP9, plays a role in DNA damage repair and in interferon-mediated antiviral responses (PubMed:[12670957](#), PubMed:[19818714](#), PubMed:[23230272](#), PubMed:[26479788](#)). Monoubiquitinates several histones, including histone H2A, H2B, H3 and H4 (PubMed:[28525742](#)). In response to DNA damage, mediates monoubiquitination of 'Lys-91' of histone H4 (H4K91ub1) (PubMed:[19818714](#)). The exact role of H4K91ub1 in DNA damage response is still unclear but it may function as a licensing signal for additional histone H4 post-translational modifications such as H4 'Lys-20' methylation (H4K20me) (PubMed:[19818714](#)). PARP1-dependent PARP9-DTX3L-mediated ubiquitination promotes the rapid and specific recruitment of 53BP1/TP53BP1, UIMC1/RAP80, and BRCA1 to DNA damage sites (PubMed:[23230272](#)). By monoubiquitinating histone H2B H2BC9/H2BJ and thereby promoting chromatin remodeling, positively regulates STAT1- dependent interferon-stimulated gene transcription and thus STAT1- mediated control of viral replication (PubMed:[26479788](#)). Independently of its catalytic activity, promotes the sorting of chemokine receptor CXCR4 from early endosome to lysosome following CXCL12 stimulation by reducing E3 ligase ITCH activity and thus ITCH-mediated ubiquitination of endosomal sorting complex required for transport ESCRT-0 components HGS and STAM (PubMed:[24790097](#)). In addition, required for the recruitment of HGS and STAM to early endosomes (PubMed:[24790097](#)). In association with PARP9, plays a role in antiviral responses by mediating 'Lys-48'-linked ubiquitination of encephalomyocarditis virus (EMCV) and human rhinovirus (HRV) C3 proteases and thus promoting their proteasomal-mediated degradation (PubMed:[26479788](#)).

## Cellular Location

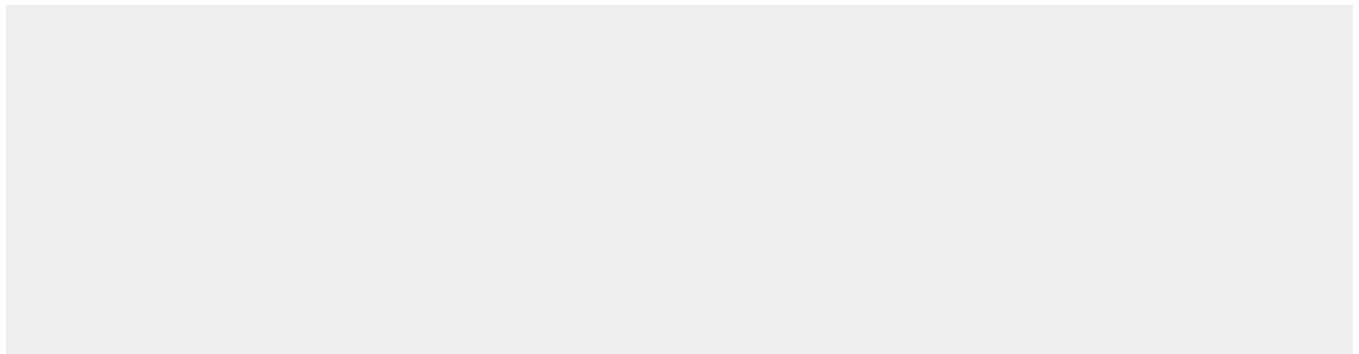
Cytoplasm. Nucleus. Early endosome membrane; Peripheral membrane protein; Cytoplasmic side. Lysosome membrane; Peripheral membrane protein; Cytoplasmic side. Note=Translocates to the nucleus in response to IFNG or IFNB1 stimulation (PubMed:[26479788](#)). Localizes at sites of DNA damage in a PARP1-dependent manner (PubMed:[23230272](#)) Localization to early endosomes is increased upon CXCL12 stimulation where it co-localizes with ITCH, CXCL4, HGS and STAM (PubMed:[24790097](#)) A minor proportion localizes to lysosomes (PubMed:[24790097](#))

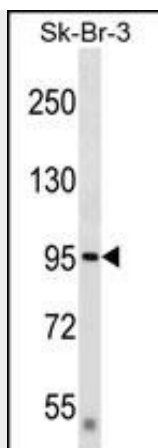
## DTX3L Antibody (Center) - Protocols

Provided below are standard protocols that you may find useful for product applications.

- [Western Blot](#)
- [Blocking Peptides](#)
- [Dot Blot](#)
- [Immunohistochemistry](#)
- [Immunofluorescence](#)
- [Immunoprecipitation](#)
- [Flow Cytometry](#)
- [Cell Culture](#)

## DTX3L Antibody (Center) - Images





DTX3L Antibody (Center) (Cat. #AP16451c) western blot analysis in SK-BR-3 cell line lysates (35ug/lane). This demonstrates the DTX3L antibody detected the DTX3L protein (arrow).

#### **DTX3L Antibody (Center) - Background**

DTX3L functions as an E3 ubiquitin ligase (Takeyama et al., 2003 [PubMed 12670957]).

#### **DTX3L Antibody (Center) - References**

- Yan, Q., et al. Mol. Cell 36(1):110-120(2009)
- Wilting, S.M., et al. Genes Chromosomes Cancer 47(10):890-905(2008)
- Juszczynski, P., et al. Mol. Cell. Biol. 26(14):5348-5359(2006)
- Takeyama, K., et al. J. Biol. Chem. 278(24):21930-21937(2003)