

Mouse Mesp1 Antibody (Center)
Affinity Purified Rabbit Polyclonal Antibody (Pab)
Catalog # AP16455c**Specification**

Mouse Mesp1 Antibody (Center) - Product Information

Application	WB,E
Primary Accession	P97309
Other Accession	O08574 , Q0VG99 , Q9BRJ9 , NP_032614.2
Reactivity	Mouse
Predicted	Human
Host	Rabbit
Clonality	Polyclonal
Isotype	Rabbit IgG
Antigen Region	62-91

Mouse Mesp1 Antibody (Center) - Additional Information**Gene ID** 17292**Other Names**

Mesoderm posterior protein 1, Mesp1

Target/Specificity

This Mouse Mesp1 antibody is generated from rabbits immunized with a KLH conjugated synthetic peptide between 62-91 amino acids from the Central region of mouse Mesp1.

Dilution

WB~~1:500-1:2000

E~~Use at an assay dependent concentration.

Format

Purified polyclonal antibody supplied in PBS with 0.09% (W/V) sodium azide. This antibody is purified through a protein A column, followed by peptide affinity purification.

Storage

Maintain refrigerated at 2-8°C for up to 2 weeks. For long term storage store at -20°C in small aliquots to prevent freeze-thaw cycles.

Precautions

Mouse Mesp1 Antibody (Center) is for research use only and not for use in diagnostic or therapeutic procedures.

Mouse Mesp1 Antibody (Center) - Protein Information**Name** Mesp1**Function** Transcription factor. Plays a role in the epithelialization of somitic mesoderm and in the

development of cardiac mesoderm. Defines the rostrocaudal patterning of the somites by participating in distinct Notch pathways.

Cellular Location

Nucleus.

Tissue Location

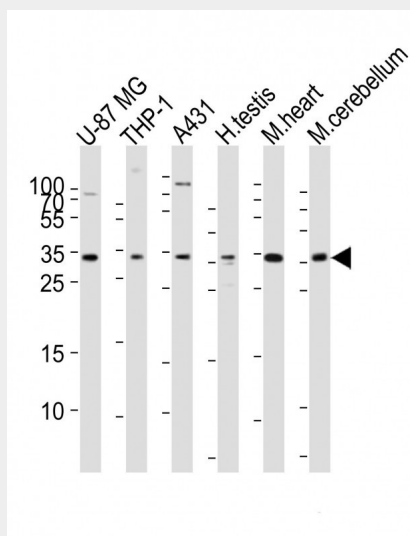
No expression was detected in adult tissues except the testis. Expression in the testis was regulated developmentally; expressed 2 weeks after birth, and increases, reaching the full expression level in mature testes.

Mouse Mesp1 Antibody (Center) - Protocols

Provided below are standard protocols that you may find useful for product applications.

- [Western Blot](#)
- [Blocking Peptides](#)
- [Dot Blot](#)
- [Immunohistochemistry](#)
- [Immunofluorescence](#)
- [Immunoprecipitation](#)
- [Flow Cytometry](#)
- [Cell Culture](#)

Mouse Mesp1 Antibody (Center) - Images



Western blot analysis of lysates from U-87 MG, THP-1, A431 cell line, human testis, mouse heart, mouse cerebellum tissue lysate (from left to right), using MESP1 Antibody (Mouse) (Cat. #AP16455c). A goat anti-rabbit IgG H&L (HRP) at 1:10000 dilution was used as the secondary antibody. Lysates at 20 µg per lane.

Mouse Mesp1 Antibody (Center) - Background

Mesp1 is a transcription factor. Plays a role in the epithelialization of somitic mesoderm and in the development of cardiac mesoderm. Defines the rostrocaudal patterning of the somites by participating in distinct Notch pathways.

Mouse Mesp1 Antibody (Center) - References

Yu, S., et al. Dev. Biol. 347(1):92-108(2010)
Li, P., et al. Dev. Cell 18(3):480-485(2010)
Powers, S.E., et al. Development 137(2):249-259(2010)
Randall, V., et al. J. Clin. Invest. 119(11):3301-3310(2009)
Dominguez-Frutos, E., et al. Mech. Dev. 126(10):873-881(2009)