

SARNP Antibody (Center)
Affinity Purified Rabbit Polyclonal Antibody (Pab)
Catalog # AP16466c**Specification**

SARNP Antibody (Center) - Product Information

Application	WB,E
Primary Accession	P82979
Other Accession	NP_149073.1
Reactivity	Human
Host	Rabbit
Clonality	Polyclonal
Isotype	Rabbit IgG
Calculated MW	23671
Antigen Region	81-110

SARNP Antibody (Center) - Additional Information**Gene ID** 84324**Other Names**

SAP domain-containing ribonucleoprotein, Cytokine-induced protein of 29 kDa, Nuclear protein Hcc-1, Proliferation-associated cytokine-inducible protein CIP29, SARNP, HCC1

Target/Specificity

This SARNP antibody is generated from rabbits immunized with a KLH conjugated synthetic peptide between 81-110 amino acids from the Central region of human SARNP.

Dilution

WB~~1:1000

E~~Use at an assay dependent concentration.

Format

Purified polyclonal antibody supplied in PBS with 0.09% (W/V) sodium azide. This antibody is purified through a protein A column, followed by peptide affinity purification.

Storage

Maintain refrigerated at 2-8°C for up to 2 weeks. For long term storage store at -20°C in small aliquots to prevent freeze-thaw cycles.

Precautions

SARNP Antibody (Center) is for research use only and not for use in diagnostic or therapeutic procedures.

SARNP Antibody (Center) - Protein Information**Name** SARNP

Synonyms HCC1

Function Binds both single-stranded and double-stranded DNA with higher affinity for the single-stranded form. Specifically binds to scaffold/matrix attachment region DNA. Also binds single-stranded RNA. Enhances RNA unwinding activity of DDX39A. May participate in important transcriptional or translational control of cell growth, metabolism and carcinogenesis. Component of the TREX complex which is thought to couple mRNA transcription, processing and nuclear export, and specifically associates with spliced mRNA and not with unspliced pre- mRNA (PubMed:[15338056](#), PubMed:[17196963](#), PubMed:[20844015](#)). The TREX complex is recruited to spliced mRNAs by a transcription-independent mechanism, binds to mRNA upstream of the exon-junction complex (EJC) and is recruited in a splicing- and cap-dependent manner to a region near the 5' end of the mRNA where it functions in mRNA export to the cytoplasm via the TAP/NXF1 pathway (PubMed:[15338056](#), PubMed:[17196963](#), PubMed:[20844015](#)). Associates with DDX39B, which facilitates RNA binding of DDX39B and likely plays a role in mRNA export (PubMed:[37578863](#)).

Cellular Location

Nucleus. Nucleus speckle.

Tissue Location

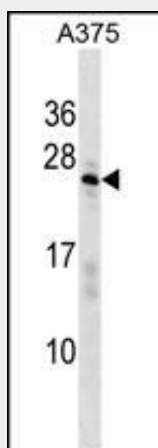
Low expression in spleen, liver, pancreas, testis, thymus, heart, and kidney. Increased levels are seen in hepatocellular carcinoma and pancreatic adenocarcinoma.

SARNP Antibody (Center) - Protocols

Provided below are standard protocols that you may find useful for product applications.

- [Western Blot](#)
- [Blocking Peptides](#)
- [Dot Blot](#)
- [Immunohistochemistry](#)
- [Immunofluorescence](#)
- [Immunoprecipitation](#)
- [Flow Cytometry](#)
- [Cell Culture](#)

SARNP Antibody (Center) - Images



SARNP Antibody (Center) (Cat. #AP16466c) western blot analysis in A375 cell line lysates (35ug/lane). This demonstrates the SARNP antibody detected the SARNP protein (arrow).

SARNP Antibody (Center) - Background

This gene encodes a protein that is upregulated in response to various cytokines. The encoded protein may play a role in cell cycle progression. A translocation between this gene and the myeloid/lymphoid leukemia gene, resulting in expression of a chimeric protein, has been associated with acute myelomonocytic leukemia. Pseudogenes exist on chromosomes 7 and 8. Alternatively spliced transcript variants have been described. [provided by RefSeq].

SARNP Antibody (Center) - References

Sugiura, T., et al. Exp. Cell Res. 313(4):782-790(2007)
Leaw, C.L., et al. Cell. Mol. Life Sci. 61(17):2264-2273(2004)
Hashii, Y., et al. Leukemia 18(9):1546-1548(2004)
Fukuda, S., et al. Biochem. Biophys. Res. Commun. 292(3):593-600(2002)
Choong, M.L., et al. FEBS Lett. 496 (2-3), 109-116 (2001) :