

MNX1 Antibody (Center)
Affinity Purified Rabbit Polyclonal Antibody (Pab)
Catalog # AP16474C**Specification**

MNX1 Antibody (Center) - Product Information

Application	WB,E
Primary Accession	P50219
Other Accession	O9OZW9 , NP_005506.3
Reactivity	Human, Mouse
Host	Rabbit
Clonality	Polyclonal
Isotype	Rabbit IgG
Calculated MW	40569
Antigen Region	242-271

MNX1 Antibody (Center) - Additional Information**Gene ID** 3110**Other Names**

Motor neuron and pancreas homeobox protein 1, Homeobox protein HB9, MNX1, HLXB9

Target/Specificity

This MNX1 antibody is generated from rabbits immunized with a KLH conjugated synthetic peptide between 242-271 amino acids from the Central region of human MNX1.

Dilution

WB~~1:1000

Format

Purified polyclonal antibody supplied in PBS with 0.09% (W/V) sodium azide. This antibody is purified through a protein A column, followed by peptide affinity purification.

Storage

Maintain refrigerated at 2-8°C for up to 2 weeks. For long term storage store at -20°C in small aliquots to prevent freeze-thaw cycles.

Precautions

MNX1 Antibody (Center) is for research use only and not for use in diagnostic or therapeutic procedures.

MNX1 Antibody (Center) - Protein Information**Name** MNX1**Synonyms** HLXB9

Function Transcription factor (By similarity). Recognizes and binds to the regulatory elements of target genes, such as visual system homeobox CHX10, negatively modulating transcription (By similarity). Plays a role in establishing motor neuron identity, in concert with LIM domain transcription factor LMO4 (By similarity). Involved in negatively modulating transcription of interneuron genes in motor neurons, acting, at least in part, by blocking regulatory sequence interactions of the ISL1-LHX3 complex (By similarity). Involved in pancreas development and function; may play a role in pancreatic cell fate specification (By similarity).

Cellular Location

Nucleus.

Tissue Location

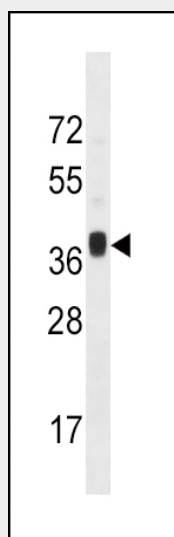
Expressed in lymphoid and pancreatic tissues.

MNX1 Antibody (Center) - Protocols

Provided below are standard protocols that you may find useful for product applications.

- [Western Blot](#)
- [Blocking Peptides](#)
- [Dot Blot](#)
- [Immunohistochemistry](#)
- [Immunofluorescence](#)
- [Immunoprecipitation](#)
- [Flow Cytometry](#)
- [Cell Culture](#)

MNX1 Antibody (Center) - Images



MNX1 Antibody (Center) (Cat. #AP16474c) western blot analysis in mouse liver tissue lysates (35ug/lane). This demonstrates the MNX1 antibody detected the MNX1 protein (arrow).

MNX1 Antibody (Center) - Background

This gene encodes a nuclear protein, which contains a homeobox domain and is a transcription factor. Mutations in this gene result in Currarino syndrome, an autosomic dominant congenital

malformation. Alternatively spliced transcript variants encoding different isoforms have been found for this gene. [provided by RefSeq].

MNX1 Antibody (Center) - References

Turgut, M. Acta Neurochir (Wien) 152(6):1083-1084(2010)
Garcia-Barcelo, M.M., et al. J. Pediatr. Surg. 44(10):1892-1898(2009)
Park, J., et al. Cancer Genet. Cytogenet. 191(2):102-105(2009)
Ballabio, E., et al. Leukemia 23(6):1179-1182(2009)
Taketani, T., et al. Cancer Genet. Cytogenet. 186(2):115-119(2008)