

ELK3 Antibody (N-term)
Affinity Purified Rabbit Polyclonal Antibody (Pab)
Catalog # AP16475a

Specification

ELK3 Antibody (N-term) - Product Information

Application	WB,E
Primary Accession	P41970
Other Accession	NP_005221.2
Reactivity	Human
Host	Rabbit
Clonality	Polyclonal
Isotype	Rabbit IgG
Calculated MW	44240
Antigen Region	98-126

ELK3 Antibody (N-term) - Additional Information

Gene ID 2004

Other Names

ETS domain-containing protein Elk-3, ETS-related protein ERP, ETS-related protein NET, Serum response factor accessory protein 2, SAP-2, SRF accessory protein 2, ELK3, NET, SAP2

Target/Specificity

This ELK3 antibody is generated from rabbits immunized with a KLH conjugated synthetic peptide between 98-126 amino acids from the N-terminal region of human ELK3.

Dilution

WB~~1:1000

E~~Use at an assay dependent concentration.

Format

Purified polyclonal antibody supplied in PBS with 0.09% (W/V) sodium azide. This antibody is purified through a protein A column, followed by peptide affinity purification.

Storage

Maintain refrigerated at 2-8°C for up to 2 weeks. For long term storage store at -20°C in small aliquots to prevent freeze-thaw cycles.

Precautions

ELK3 Antibody (N-term) is for research use only and not for use in diagnostic or therapeutic procedures.

ELK3 Antibody (N-term) - Protein Information

Name ELK3

Synonyms NET, SAP2

Function May be a negative regulator of transcription, but can activate transcription when coexpressed with Ras, Src or Mos. Forms a ternary complex with the serum response factor and the ETS and SRF motifs of the Fos serum response element.

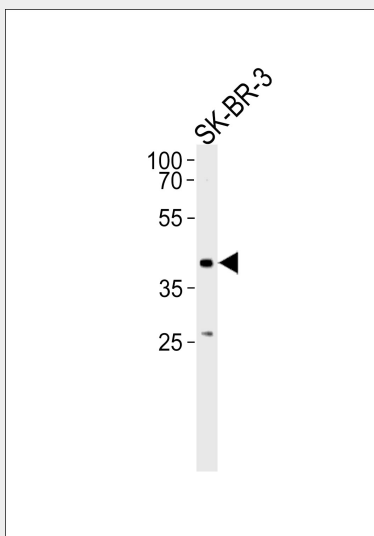
Cellular Location

Nucleus.

ELK3 Antibody (N-term) - Protocols

Provided below are standard protocols that you may find useful for product applications.

- [Western Blot](#)
- [Blocking Peptides](#)
- [Dot Blot](#)
- [Immunohistochemistry](#)
- [Immunofluorescence](#)
- [Immunoprecipitation](#)
- [Flow Cytometry](#)
- [Cell Culture](#)

ELK3 Antibody (N-term) - Images

ELK3 Antibody (N-term) (Cat. #AP16475a) western blot analysis in SK-BR-3 cell line lysates (35ug/lane). This demonstrates the ELK3 antibody detected the ELK3 protein (arrow).

ELK3 Antibody (N-term) - Background

The protein encoded by this gene is a member of the ETS-domain transcription factor family and the ternary complex factor (TCF) subfamily. Proteins in this subfamily regulate transcription when recruited by serum response factor to bind to serum response elements. This protein is activated by signal-induced phosphorylation; studies in rodents suggest that it is a transcriptional inhibitor in the absence of Ras, but activates transcription when Ras is present.

ELK3 Antibody (N-term) - References

Serchov, T., et al. J. Biol. Chem. 285(28):21223-21232(2010)
Rose, J.E., et al. Mol. Med. 16 (7-8), 247-253 (2010) :
Li, B., et al. Tohoku J. Exp. Med. 216(2):139-147(2008)
Wasylyk, C., et al. Cancer Res. 68(5):1275-1283(2008)
Wu, C., et al. Proteomics 7(11):1775-1785(2007)