

**KLF12 Antibody (C-term)**  
**Affinity Purified Rabbit Polyclonal Antibody (Pab)**  
**Catalog # AP16476b****Specification**

---

**KLF12 Antibody (C-term) - Product Information**

Application	WB,E
Primary Accession	<a href="#">O9Y4X4</a>
Other Accession	<a href="#">O35738</a> , <a href="#">NP_009180.3</a>
Reactivity	Human, Mouse
Host	Rabbit
Clonality	Polyclonal
Isotype	Rabbit IgG
Calculated MW	44240
Antigen Region	283-312

**KLF12 Antibody (C-term) - Additional Information****Gene ID** 11278**Other Names**

Krueppel-like factor 12, Transcriptional repressor AP-2rep, KLF12, AP2REP

**Target/Specificity**

This KLF12 antibody is generated from rabbits immunized with a KLH conjugated synthetic peptide between 283-312 amino acids from the C-terminal region of human KLF12.

**Dilution**

WB~~1:1000

**Format**

Purified polyclonal antibody supplied in PBS with 0.09% (W/V) sodium azide. This antibody is purified through a protein A column, followed by peptide affinity purification.

**Storage**

Maintain refrigerated at 2-8°C for up to 2 weeks. For long term storage store at -20°C in small aliquots to prevent freeze-thaw cycles.

**Precautions**

KLF12 Antibody (C-term) is for research use only and not for use in diagnostic or therapeutic procedures.

**KLF12 Antibody (C-term) - Protein Information****Name** KLF12**Synonyms** AP2REP

**Function** Confers strong transcriptional repression to the AP-2-alpha gene. Binds to a regulatory element (A32) in the AP-2-alpha gene promoter.

**Cellular Location**

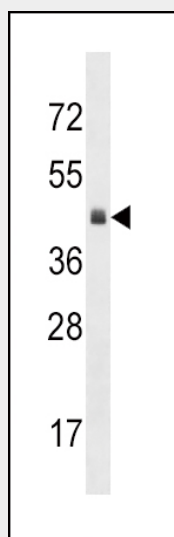
Nucleus.

**KLF12 Antibody (C-term) - Protocols**

Provided below are standard protocols that you may find useful for product applications.

- [Western Blot](#)
- [Blocking Peptides](#)
- [Dot Blot](#)
- [Immunohistochemistry](#)
- [Immunofluorescence](#)
- [Immunoprecipitation](#)
- [Flow Cytometry](#)
- [Cell Culture](#)

**KLF12 Antibody (C-term) - Images**



KLF12 Antibody (C-term) (Cat. #AP16476b) western blot analysis in mouse heart tissue lysates (35ug/lane). This demonstrates the KLF12 antibody detected the KLF12 protein (arrow).

**KLF12 Antibody (C-term) - Background**

Activator protein-2 alpha (AP-2 alpha) is a developmentally-regulated transcription factor and important regulator of gene expression during vertebrate development and carcinogenesis. The protein encoded by this gene is a member of the Kruppel-like zinc finger protein family and can repress expression of the AP-2 alpha gene by binding to a specific site in the AP-2 alpha gene promoter. Repression by the encoded protein requires binding with a corepressor, CtBP1. Two transcript variants encoding different isoforms have been found for this gene. [provided by RefSeq].

**KLF12 Antibody (C-term) - References**

Rose, J.E., et al. Mol. Med. 16 (7-8), 247-253 (2010) :  
Eyre, S., et al. Ann. Rheum. Dis. 69(7):1407-1408(2010)  
Wieczorek, S., et al. J. Mol. Med. 88(4):413-421(2010)  
Petersen, G.M., et al. Nat. Genet. 42(3):224-228(2010)  
Nakamura, Y., et al. Int. J. Cancer 125(8):1859-1867(2009)