

**ELOVL7 Antibody (C-term)**  
**Affinity Purified Rabbit Polyclonal Antibody (Pab)**  
**Catalog # AP16487b****Specification**

---

**ELOVL7 Antibody (C-term) - Product Information**

Application	WB,E
Primary Accession	<a href="#">A1L3X0</a>
Other Accession	<a href="#">NP_079206.2</a>
Reactivity	Human, Mouse
Host	Rabbit
Clonality	Polyclonal
Isotype	Rabbit IgG
Calculated MW	33356
Antigen Region	244-273

**ELOVL7 Antibody (C-term) - Additional Information****Gene ID** 79993**Other Names**

Elongation of very long chain fatty acids protein 7, 3-keto acyl-CoA synthase ELOVL7, ELOVL fatty acid elongase 7, ELOVL FA elongase 7, Very-long-chain 3-oxoacyl-CoA synthase 7, ELOVL7

**Target/Specificity**

This ELOVL7 antibody is generated from rabbits immunized with a KLH conjugated synthetic peptide between 244-273 amino acids from the C-terminal region of human ELOVL7.

**Dilution**

WB~~1:1000

**Format**

Purified polyclonal antibody supplied in PBS with 0.09% (W/V) sodium azide. This antibody is purified through a protein A column, followed by peptide affinity purification.

**Storage**

Maintain refrigerated at 2-8°C for up to 2 weeks. For long term storage store at -20°C in small aliquots to prevent freeze-thaw cycles.

**Precautions**

ELOVL7 Antibody (C-term) is for research use only and not for use in diagnostic or therapeutic procedures.

**ELOVL7 Antibody (C-term) - Protein Information****Name** ELOVL7 {ECO:0000255|HAMAP-Rule:MF\_03207}**Function** Catalyzes the first and rate-limiting reaction of the four reactions that constitute the

long-chain fatty acids elongation cycle. This endoplasmic reticulum-bound enzymatic process allows the addition of 2 carbons to the chain of long- and very long-chain fatty acids (VLCFAs) per cycle. Condensing enzyme with higher activity toward C18 acyl-CoAs, especially C18:3(n-3) acyl-CoAs and C18:3(n-6)-CoAs. Also active toward C20:4-, C18:0-, C18:1-, C18:2- and C16:0-CoAs, and weakly toward C20:0-CoA. Little or no activity toward C22:0-, C24:0-, or C26:0-CoAs. May participate in the production of saturated and polyunsaturated VLCFAs of different chain lengths that are involved in multiple biological processes as precursors of membrane lipids and lipid mediators.

#### Cellular Location

Endoplasmic reticulum membrane {ECO:0000255|HAMAP-Rule:MF\_03207, ECO:0000269|PubMed:20937905}; Multi-pass membrane protein {ECO:0000255|HAMAP-Rule:MF\_03207}

#### Tissue Location

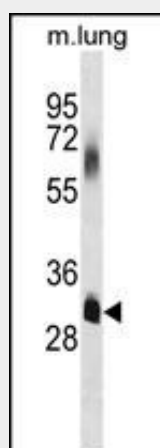
Expressed in most tissues except heart and skeletal muscle.

### ELOVL7 Antibody (C-term) - Protocols

Provided below are standard protocols that you may find useful for product applications.

- [Western Blot](#)
- [Blocking Peptides](#)
- [Dot Blot](#)
- [Immunohistochemistry](#)
- [Immunofluorescence](#)
- [Immunoprecipitation](#)
- [Flow Cytometry](#)
- [Cell Culture](#)

### ELOVL7 Antibody (C-term) - Images



ELOVL7 Antibody (C-term) (Cat. #AP16487b) western blot analysis in mouse lung tissue lysates (35ug/lane). This demonstrates the ELOVL7 antibody detected the ELOVL7 protein (arrow).

### ELOVL7 Antibody (C-term) - Background

ELOVL7 could be implicated in synthesis of very long chain fatty acids and sphingolipids (By similarity).

**ELOVL7 Antibody (C-term) - References**

Rose, J.E., et al. Mol. Med. 16 (7-8), 247-253 (2010) :  
Tamura, K., et al. Cancer Res. 69(20):8133-8140(2009)  
Lehner, R., et al. Prog. Lipid Res. 35(2):169-201(1996)