

**FOSL2 Antibody (C-term)**  
**Affinity Purified Rabbit Polyclonal Antibody (Pab)**  
**Catalog # AP16490B****Specification**

---

**FOSL2 Antibody (C-term) - Product Information**

Application	IF, WB,E
Primary Accession	<a href="#">P15408</a>
Other Accession	<a href="#">NP_005244.1</a>
Reactivity	Human
Host	Rabbit
Clonality	Polyclonal
Isotype	Rabbit IgG
Calculated MW	35193
Antigen Region	220-248

**FOSL2 Antibody (C-term) - Additional Information****Gene ID** 2355**Other Names**

Fos-related antigen 2, FRA-2, FOSL2, FRA2

**Target/Specificity**

This FOSL2 antibody is generated from rabbits immunized with a KLH conjugated synthetic peptide between 220-248 amino acids from the C-terminal region of human FOSL2.

**Dilution**

IF~~1:10~50

WB~~1:1000

E~~Use at an assay dependent concentration.

**Format**

Purified polyclonal antibody supplied in PBS with 0.09% (W/V) sodium azide. This antibody is purified through a protein A column, followed by peptide affinity purification.

**Storage**

Maintain refrigerated at 2-8°C for up to 2 weeks. For long term storage store at -20°C in small aliquots to prevent freeze-thaw cycles.

**Precautions**

FOSL2 Antibody (C-term) is for research use only and not for use in diagnostic or therapeutic procedures.

**FOSL2 Antibody (C-term) - Protein Information****Name** FOSL2

**Synonyms** FRA2

**Function** Controls osteoclast survival and size (By similarity). As a dimer with JUN, activates LIF transcription (By similarity). Activates CEBPB transcription in PGE2-activated osteoblasts (By similarity).

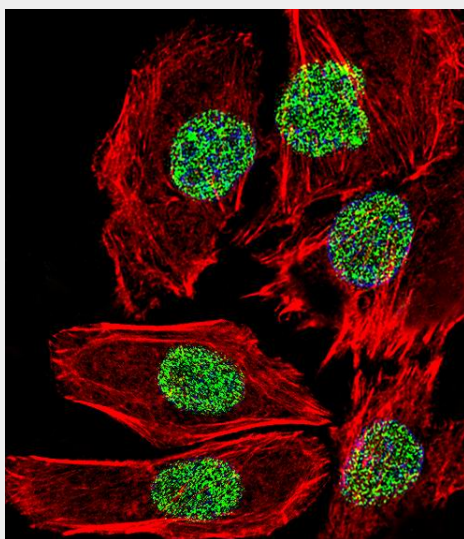
**Cellular Location**

Nucleus {ECO:0000250|UniProtKB:P51145}.

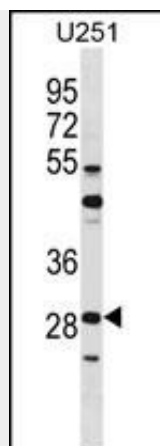
**FOSL2 Antibody (C-term) - Protocols**

Provided below are standard protocols that you may find useful for product applications.

- [Western Blot](#)
- [Blocking Peptides](#)
- [Dot Blot](#)
- [Immunohistochemistry](#)
- [Immunofluorescence](#)
- [Immunoprecipitation](#)
- [Flow Cytometry](#)
- [Cell Culture](#)

**FOSL2 Antibody (C-term) - Images**

Fluorescent confocal image of A549 cell stained with FOSL2 Antibody (C-term)(Cat#AP16490b). A549 cells were fixed with 4% PFA (20 min), permeabilized with Triton X-100 (0.1%, 10 min), then incubated with FOSL2 primary antibody (1:25, 1 h at 37°C). For secondary antibody, Alexa Fluor® 488 conjugated donkey anti-rabbit antibody (green) was used (1:400, 50 min at 37°C). Cytoplasmic actin was counterstained with Alexa Fluor® 555 (red) conjugated Phalloidin (7units/ml, 1 h at 37°C). Nuclei were counterstained with DAPI (blue) (10 µg/ml, 10 min). FOSL2 immunoreactivity is localized to Nucleus significantly.



FOSL2 Antibody (C-term) (Cat. #AP16490b) western blot analysis in U251 cell line lysates (35ug/lane). This demonstrates the FOSL2 antibody detected the FOSL2 protein (arrow).

#### **FOSL2 Antibody (C-term) - Background**

The Fos gene family consists of 4 members: FOS, FOSB, FOSL1, and FOSL2. These genes encode leucine zipper proteins that can dimerize with proteins of the JUN family, thereby forming the transcription factor complex AP-1. As such, the FOS proteins have been implicated as regulators of cell proliferation, differentiation, and transformation.

#### **FOSL2 Antibody (C-term) - References**

Bozec, A., et al. J. Cell Biol. 190(6):1093-1106(2010)  
Bolat, I., et al. Folia Histochem. Cytobiol. 48(2):197-201(2010)  
Reich, N., et al. Arthritis Rheum. 62(1):280-290(2010)  
Maurer, B., et al. Circulation 120(23):2367-2376(2009)  
Tabakoff, B., et al. BMC Biol. 7, 70 (2009) :