

PGRMC2 Antibody (C-term)
Affinity Purified Rabbit Polyclonal Antibody (Pab)
Catalog # AP16497b

Specification

PGRMC2 Antibody (C-term) - Product Information

Application	WB,E
Primary Accession	O15173
Other Accession	NP_006311.1
Reactivity	Human
Host	Rabbit
Clonality	Polyclonal
Isotype	Rabbit IgG
Calculated MW	23818
Antigen Region	192-221

PGRMC2 Antibody (C-term) - Additional Information

Gene ID 10424

Other Names

Membrane-associated progesterone receptor component 2, Progesterone membrane-binding protein, Steroid receptor protein DG6, PGRMC2, DG6, PMBP

Target/Specificity

This PGRMC2 antibody is generated from rabbits immunized with a KLH conjugated synthetic peptide between 192-221 amino acids from the C-terminal region of human PGRMC2.

Dilution

WB~~1:1000

E~~Use at an assay dependent concentration.

Format

Purified polyclonal antibody supplied in PBS with 0.09% (W/V) sodium azide. This antibody is purified through a protein A column, followed by peptide affinity purification.

Storage

Maintain refrigerated at 2-8°C for up to 2 weeks. For long term storage store at -20°C in small aliquots to prevent freeze-thaw cycles.

Precautions

PGRMC2 Antibody (C-term) is for research use only and not for use in diagnostic or therapeutic procedures.

PGRMC2 Antibody (C-term) - Protein Information

Name PGRMC2 ([HGNC:16089](#))

Function Required for the maintenance of uterine histoarchitecture and normal female reproductive lifespan (By similarity). May serve as a universal non-classical progesterone receptor in the uterus (Probable). Intracellular heme chaperone required for delivery of labile, or signaling heme, to the nucleus (By similarity). Plays a role in adipocyte function and systemic glucose homeostasis (PubMed:[28111073](#)). In brown fat, which has a high demand for heme, delivery of labile heme in the nucleus regulates the activity of heme-responsive transcriptional repressors such as NR1D1 and BACH1 (By similarity).

Cellular Location

Membrane; Single-pass membrane protein. Nucleus envelope. Endoplasmic reticulum. Secreted

Tissue Location

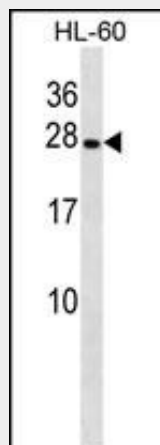
Expressed by endometrial glands and stroma (at protein level) (PubMed:23793472). Detected in urine (at protein level) (PubMed:37453717).

PGRMC2 Antibody (C-term) - Protocols

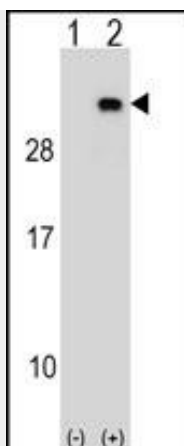
Provided below are standard protocols that you may find useful for product applications.

- [Western Blot](#)
- [Blocking Peptides](#)
- [Dot Blot](#)
- [Immunohistochemistry](#)
- [Immunofluorescence](#)
- [Immunoprecipitation](#)
- [Flow Cytometry](#)
- [Cell Culture](#)

PGRMC2 Antibody (C-term) - Images



PGRMC2 Antibody (C-term) (Cat. #AP16497b) western blot analysis in HL-60 cell line lysates (35ug/lane). This demonstrates the PGRMC2 antibody detected the PGRMC2 protein (arrow).



Western blot analysis of PGRMC2 (arrow) using rabbit polyclonal PGRMC2 Antibody (C-term) (Cat. #AP16497b). 293 cell lysates (2 ug/lane) either nontransfected (Lane 1) or transiently transfected (Lane 2) with the PGRMC2 gene.

PGRMC2 Antibody (C-term) - Background

PGRMC2 is receptor for steroids (Potential).