

ADAM23 Antibody (C-term)
Affinity Purified Rabbit Polyclonal Antibody (Pab)
Catalog # AP16502B**Specification**

ADAM23 Antibody (C-term) - Product Information

| | |
|-------------------|--|
| Application | WB,E |
| Primary Accession | O75077 |
| Other Accession | O9R1V7 , NP_003803.1 |
| Reactivity | Human |
| Predicted | Mouse |
| Host | Rabbit |
| Clonality | Polyclonal |
| Isotype | Rabbit IgG |
| Calculated MW | 91926 |
| Antigen Region | 803-831 |

ADAM23 Antibody (C-term) - Additional Information**Gene ID** 8745**Other Names**

Disintegrin and metalloproteinase domain-containing protein 23, ADAM 23, Metalloproteinase-like, disintegrin-like, and cysteine-rich protein 3, MDC-3, ADAM23, MDC3

Target/Specificity

This ADAM23 antibody is generated from rabbits immunized with a KLH conjugated synthetic peptide between 803-831 amino acids from the C-terminal region of human ADAM23.

Dilution

WB~~1:1000

E~~Use at an assay dependent concentration.

Format

Purified polyclonal antibody supplied in PBS with 0.09% (W/V) sodium azide. This antibody is purified through a protein A column, followed by peptide affinity purification.

Storage

Maintain refrigerated at 2-8°C for up to 2 weeks. For long term storage store at -20°C in small aliquots to prevent freeze-thaw cycles.

Precautions

ADAM23 Antibody (C-term) is for research use only and not for use in diagnostic or therapeutic procedures.

ADAM23 Antibody (C-term) - Protein Information**Name** ADAM23

Synonyms MDC3

Function May play a role in cell-cell and cell-matrix interactions. This is a non-catalytic metalloprotease-like protein.

Cellular Location

Cell membrane; Single-pass type I membrane protein

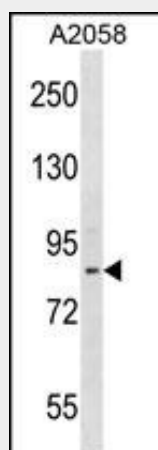
Tissue Location

Highly expressed in the brain and weakly expressed in the heart. In the brain, expressed prominently in the amygdala, caudate nucleus, hypothalamus, thalamus, cerebral cortex and occipital pole.

ADAM23 Antibody (C-term) - Protocols

Provided below are standard protocols that you may find useful for product applications.

- [Western Blot](#)
- [Blocking Peptides](#)
- [Dot Blot](#)
- [Immunohistochemistry](#)
- [Immunofluorescence](#)
- [Immunoprecipitation](#)
- [Flow Cytometry](#)
- [Cell Culture](#)

ADAM23 Antibody (C-term) - Images

ADAM23 Antibody (C-term) (Cat. #AP16502b) western blot analysis in A2058 cell line lysates (35ug/lane). This demonstrates the ADAM23 antibody detected the ADAM23 protein (arrow).

ADAM23 Antibody (C-term) - Background

This gene encodes a member of the ADAM (a disintegrin and metalloprotease domain) family. Members of this family are membrane-anchored proteins structurally related to snake venom disintegrins, and have been implicated in a variety of biological processes involving cell-cell and cell-matrix interactions, including fertilization, muscle development, and neurogenesis. This gene is highly expressed in the brain and may function as an

integrin ligand in the brain.

ADAM23 Antibody (C-term) - References

Pan, Q., et al. Biochem. Biophys. Res. Commun. 401(2):306-312(2010)
Rose, J.E., et al. Mol. Med. 16 (7-8), 247-253 (2010) :
Ferreira, M.A., et al. Allergy 64(11):1623-1628(2009)
Costa, M.D., et al. Neurosci. Lett. 461(1):16-20(2009)
Verbisck, N.V., et al. Cancer Res. 69(13):5546-5552(2009)