

CYTH4 Antibody (C-term)
Affinity Purified Rabbit Polyclonal Antibody (Pab)
Catalog # AP16507b

Specification

CYTH4 Antibody (C-term) - Product Information

Application	WB,E
Primary Accession	Q9UIA0
Other Accession	NP_037517.1
Reactivity	Human
Host	Rabbit
Clonality	Polyclonal
Isotype	Rabbit IgG
Calculated MW	45672
Antigen Region	291-319

CYTH4 Antibody (C-term) - Additional Information

Gene ID 27128

Other Names

Cytohesin-4, PH, SEC7 and coiled-coil domain-containing protein 4, CYTH4, CYT4, PSCD4

Target/Specificity

This CYTH4 antibody is generated from rabbits immunized with a KLH conjugated synthetic peptide between 291-319 amino acids from the C-terminal region of human CYTH4.

Dilution

WB~~1:1000

Format

Purified polyclonal antibody supplied in PBS with 0.09% (W/V) sodium azide. This antibody is purified through a protein A column, followed by peptide affinity purification.

Storage

Maintain refrigerated at 2-8°C for up to 2 weeks. For long term storage store at -20°C in small aliquots to prevent freeze-thaw cycles.

Precautions

CYTH4 Antibody (C-term) is for research use only and not for use in diagnostic or therapeutic procedures.

CYTH4 Antibody (C-term) - Protein Information

Name CYTH4

Synonyms CYT4, PSCD4

Function Promotes guanine-nucleotide exchange on ARF1 and ARF5. Promotes the activation of ARF factors through replacement of GDP with GTP.

Cellular Location

Cell membrane; Peripheral membrane protein

Tissue Location

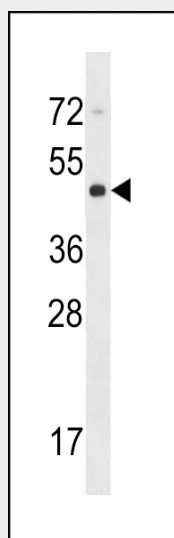
Expressed predominantly in peripheral blood leukocytes.

CYTH4 Antibody (C-term) - Protocols

Provided below are standard protocols that you may find useful for product applications.

- [Western Blot](#)
- [Blocking Peptides](#)
- [Dot Blot](#)
- [Immunohistochemistry](#)
- [Immunofluorescence](#)
- [Immunoprecipitation](#)
- [Flow Cytometry](#)
- [Cell Culture](#)

CYTH4 Antibody (C-term) - Images



CYTH4 Antibody (C-term) (Cat. #AP16507b) western blot analysis in NCI-H292 cell line lysates (35ug/lane). This demonstrates the CYTH4 antibody detected the CYTH4 protein (arrow).

CYTH4 Antibody (C-term) - Background

The protein encoded by this gene is a member of the PSCD family. Members of this family have identical structural organization that consists of an N-terminal coiled-coil motif, a central Sec7 domain, and a C-terminal pleckstrin homology (PH) domain. The coiled-coil motif is involved in homodimerization, the Sec7 domain contains guanine-nucleotide exchange protein (GEP) activity, and the PH domain interacts with phospholipids and is responsible for association of PSCDs with membranes. Members of

this family appear to mediate the regulation of protein sorting and membrane trafficking. The encoded protein exhibits GEP activity in vitro with both ARF1 and ARF5 but is inactive with ARF6. The structures of this gene and CYTH1 are very similar. [provided by RefSeq].

CYTH4 Antibody (C-term) - References

Rose, J.E., et al. Mol. Med. 16 (7-8), 247-253 (2010) :
Morishige, M., et al. Nat. Cell Biol. 10(1):85-92(2008)
Beausoleil, S.A., et al. Proc. Natl. Acad. Sci. U.S.A. 101(33):12130-12135(2004)
Beausoleil, S.A., et al. Proc. Natl. Acad. Sci. U.S.A. 101(33):12130-12135(2004)
Collins, J.E., et al. Genome Biol. 5 (10), R84 (2004) :