

ZC3H14 Antibody (Center)
Affinity Purified Rabbit Polyclonal Antibody (Pab)
Catalog # AP16512c**Specification**

ZC3H14 Antibody (Center) - Product Information

Application	WB,E
Primary Accession	Q6PJT7
Other Accession	Q4R6F6 , NP_997545.2
Reactivity	Human
Predicted	Monkey
Host	Rabbit
Clonality	Polyclonal
Isotype	Rabbit IgG
Calculated MW	82876
Antigen Region	401-429

ZC3H14 Antibody (Center) - Additional Information**Gene ID** 79882**Other Names**

Zinc finger CCCH domain-containing protein 14, Mammalian suppressor of tau pathology-2, MSUT-2, Renal carcinoma antigen NY-REN-37, ZC3H14

Target/Specificity

This ZC3H14 antibody is generated from rabbits immunized with a KLH conjugated synthetic peptide between 401-429 amino acids from the Central region of human ZC3H14.

Dilution

WB~~1:1000

E~~Use at an assay dependent concentration.

Format

Purified polyclonal antibody supplied in PBS with 0.09% (W/V) sodium azide. This antibody is purified through a protein A column, followed by peptide affinity purification.

Storage

Maintain refrigerated at 2-8°C for up to 2 weeks. For long term storage store at -20°C in small aliquots to prevent freeze-thaw cycles.

Precautions

ZC3H14 Antibody (Center) is for research use only and not for use in diagnostic or therapeutic procedures.

ZC3H14 Antibody (Center) - Protein Information

Name ZC3H14 {ECO:0000303|PubMed:19303045, ECO:0000312|HGNC:HGNC:20509}

Function RNA-binding protein involved in the biogenesis of circular RNAs (circRNAs), which are produced by back-splicing circularization of pre-mRNAs (PubMed:[39461343](#)). Acts by binding to both exon-intron boundary and 3'-UTR of pre-mRNAs to promote circRNA biogenesis through dimerization and the association with the spliceosome (PubMed:[39461343](#)). Required for spermatogenesis via involvement in circRNA biogenesis (PubMed:[39461343](#)). Regulates the pre-mRNA processing of ATP5MC1; preventing its degradation (PubMed:[27563065](#)). Also binds the poly(A) tail of mRNAs; controlling poly(A) length in neuronal cells (PubMed:[17630287](#), PubMed:[24671764](#)).

Cellular Location

Nucleus speckle Note=Colocalizes with poly(A) RNA in nuclear speckles
{ECO:0000250|UniProtKB:Q7TMD5} [Isoform 3]: Nucleus speckle

Tissue Location

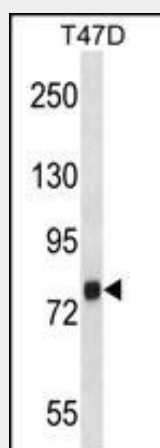
[Isoform 1]: Expressed in fetal and adult brain (PubMed:21734151). Expressed in fetal and adult temporal lobe (PubMed:21734151).

ZC3H14 Antibody (Center) - Protocols

Provided below are standard protocols that you may find useful for product applications.

- [Western Blot](#)
- [Blocking Peptides](#)
- [Dot Blot](#)
- [Immunohistochemistry](#)
- [Immunofluorescence](#)
- [Immunoprecipitation](#)
- [Flow Cytometry](#)
- [Cell Culture](#)

ZC3H14 Antibody (Center) - Images



ZC3H14 Antibody (Center) (Cat. #AP16512c) western blot analysis in T47D cell line lysates (35ug/lane). This demonstrates the ZC3H14 antibody detected the ZC3H14 protein (arrow).

ZC3H14 Antibody (Center) - Background

ZC3H14 belongs to a family of poly(A)-binding proteins that influence gene expression by regulating mRNA stability, nuclear export, and translation (Kelly et al., 2007 [PubMed

17630287])).

ZC3H14 Antibody (Center) - References

Wheeler, J.M., et al. Biochem. Soc. Trans. 38(4):973-976(2010)

Leung, S.W., et al. Gene 439 (1-2), 71-78 (2009) :

Kelly, S.M., et al. Proc. Natl. Acad. Sci. U.S.A. 104(30):12306-12311(2007)

Scanlan, M.J., et al. Int. J. Cancer 83(4):456-464(1999)