

RFNG Antibody (C-term)
Affinity Purified Rabbit Polyclonal Antibody (Pab)
Catalog # AP16514b**Specification**

RFNG Antibody (C-term) - Product Information

Application	WB,E
Primary Accession	O9Y644
Other Accession	NP_002908.1
Reactivity	Human
Host	Rabbit
Clonality	Polyclonal
Isotype	Rabbit IgG
Calculated MW	36424
Antigen Region	282-310

RFNG Antibody (C-term) - Additional Information**Gene ID** 5986**Other Names**Beta-1, 3-N-acetylglucosaminyltransferase radical fringe, O-fucosylpeptide
3-beta-N-acetylglucosaminyltransferase, RFNG**Target/Specificity**

This RFNG antibody is generated from rabbits immunized with a KLH conjugated synthetic peptide between 282-310 amino acids from the C-terminal region of human RFNG.

Dilution

WB~~1:1000

E~~Use at an assay dependent concentration.

Format

Purified polyclonal antibody supplied in PBS with 0.09% (W/V) sodium azide. This antibody is purified through a protein A column, followed by peptide affinity purification.

Storage

Maintain refrigerated at 2-8°C for up to 2 weeks. For long term storage store at -20°C in small aliquots to prevent freeze-thaw cycles.

Precautions

RFNG Antibody (C-term) is for research use only and not for use in diagnostic or therapeutic procedures.

RFNG Antibody (C-term) - Protein Information**Name** RFNG ([HGNC:9974](#))

Function Glycosyltransferase that initiates the elongation of O-linked fucose residues attached to EGF-like repeats in the extracellular domain of Notch molecules. Modulates NOTCH1 activity by modifying O- fucose residues at specific EGF-like domains resulting in enhancement of NOTCH1 activation by DLL1 and JAG1. May be involved in limb formation and in neurogenesis.

Cellular Location

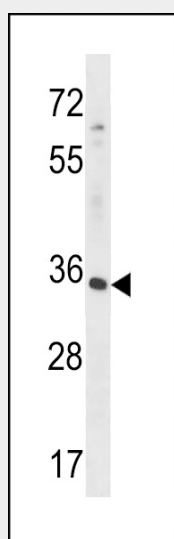
Golgi apparatus membrane; Single- pass type II membrane protein

RFNG Antibody (C-term) - Protocols

Provided below are standard protocols that you may find useful for product applications.

- [Western Blot](#)
- [Blocking Peptides](#)
- [Dot Blot](#)
- [Immunohistochemistry](#)
- [Immunofluorescence](#)
- [Immunoprecipitation](#)
- [Flow Cytometry](#)
- [Cell Culture](#)

RFNG Antibody (C-term) - Images



RFNG Antibody (C-term) (Cat. #AP16514b) western blot analysis in HepG2 cell line lysates (35ug/lane). This demonstrates the RFNG antibody detected the RFNG protein (arrow).

RFNG Antibody (C-term) - Background

Glycosyltransferase that initiates the elongation of O-linked fucose residues attached to EGF-like repeats in the extracellular domain of Notch molecules. May be involved in limb formation and in neurogenesis (By similarity).

RFNG Antibody (C-term) - References

Mikami, T., et al. Brain Res. Mol. Brain Res. 86 (1-2), 138-144 (2001) :
Moran, J.L., et al. Mamm. Genome 10(6):535-541(1999)
Johnston, S.H., et al. Development 124(11):2245-2254(1997)