

**GRHL3 Antibody (N-term)**  
**Affinity Purified Rabbit Polyclonal Antibody (Pab)**  
**Catalog # AP16526b****Specification**

---

**GRHL3 Antibody (N-term) - Product Information**

|                   |                             |
|-------------------|-----------------------------|
| Application       | WB,E                        |
| Primary Accession | <a href="#">Q8TE85</a>      |
| Other Accession   | <a href="#">NP_937817.2</a> |
| Reactivity        | Human                       |
| Host              | Rabbit                      |
| Clonality         | Polyclonal                  |
| Isotype           | Rabbit IgG                  |
| Calculated MW     | 70345                       |
| Antigen Region    | 1-30                        |

**GRHL3 Antibody (N-term) - Additional Information****Gene ID** 57822**Other Names**

Grainyhead-like protein 3 homolog, Sister of mammalian grainyhead, Transcription factor CP2-like 4, GRHL3, SOM, TFCEP2L4

**Target/Specificity**

This GRHL3 antibody is generated from rabbits immunized with a KLH conjugated synthetic peptide between 1-30 amino acids from the N-terminal region of human GRHL3.

**Dilution**

WB~~1:1000

E~~Use at an assay dependent concentration.

**Format**

Purified polyclonal antibody supplied in PBS with 0.09% (W/V) sodium azide. This antibody is purified through a protein A column, followed by peptide affinity purification.

**Storage**

Maintain refrigerated at 2-8°C for up to 2 weeks. For long term storage store at -20°C in small aliquots to prevent freeze-thaw cycles.

**Precautions**

GRHL3 Antibody (N-term) is for research use only and not for use in diagnostic or therapeutic procedures.

**GRHL3 Antibody (N-term) - Protein Information****Name** GRHL3 ([HGNC:25839](#))

**Function** Transcription factor playing important roles in primary neurulation and in the differentiation of stratified epithelia of both ectodermal and endodermal origin (By similarity). Binds directly to the consensus DNA sequence 5'-AACCGGTT-3' acting as an activator and repressor on distinct target genes (PubMed:[21081122](#), PubMed:[25347468](#)). Exhibits functional redundancy with GRHL2 in epidermal morphogenetic events and epidermal wound repair (By similarity). Exhibits functional redundancy with GRHL2 in epidermal morphogenetic events and epidermal wound repair but is essential to form the epidermal barrier with TGM3 as critical direct target gene among others. Despite being dispensable during normal epidermal homeostasis in the adulthood, is again required for barrier repair after immune-mediated epidermal damage, regulates distinct gene batteries in embryonic epidermal differentiation and adult epidermal barrier reformation after injury. Plays unique and cooperative roles with GRHL2 in establishing distinct zones of primary neurulation. Essential for spinal closure, functions cooperatively with GRHL2 in closure 2 (forebrain/midbrain boundary) and posterior neuropore closure (By similarity). Also required for proper development of the oral periderm (PubMed:[24360809](#)). No genetic interaction with GRHL3, no functional cooperativity due to diverse target gene selectivity (PubMed:[21081122](#)).

#### Cellular Location

Nucleus.

#### Tissue Location

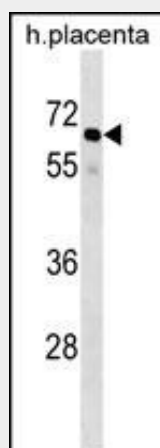
Expressed in brain, colon, pancreas, placenta and kidney. Isoform 1 is expressed in lung and tonsil. Isoform 2 is prostate-specific.

#### GRHL3 Antibody (N-term) - Protocols

Provided below are standard protocols that you may find useful for product applications.

- [Western Blot](#)
- [Blocking Peptides](#)
- [Dot Blot](#)
- [Immunohistochemistry](#)
- [Immunofluorescence](#)
- [Immunoprecipitation](#)
- [Flow Cytometry](#)
- [Cell Culture](#)

#### GRHL3 Antibody (N-term) - Images



GRHL3 Antibody (N-term) (Cat. #AP16526b) western blot analysis in human placenta tissue

lysates (35ug/lane). This demonstrates the GRHL3 antibody detected the GRHL3 protein (arrow).

#### **GRHL3 Antibody (N-term) - Background**

This gene encodes a member of the grainyhead family of transcription factors. The encoded protein may function as a transcription factor during development, and has been shown to stimulate migration of endothelial cells. Multiple transcript variants encoding distinct isoforms have been identified for this gene.

#### **GRHL3 Antibody (N-term) - References**

Guardiola-Serrano, F., et al. Biochem. Biophys. Res. Commun. 376(4):748-752(2008)  
Ting, S.B., et al. Biochem. J. 370 (PT 3), 953-962 (2003) :