

**DND1 Antibody (Center)**  
**Affinity Purified Rabbit Polyclonal Antibody (Pab)**  
**Catalog # AP16527c****Specification**

---

**DND1 Antibody (Center) - Product Information**

Application	WB,E
Primary Accession	<a href="#">Q8IYX4</a>
Other Accession	<a href="#">NP_919225.1</a>
Reactivity	Human
Host	Rabbit
Clonality	Polyclonal
Isotype	Rabbit IgG
Calculated MW	38687
Antigen Region	198-226

**DND1 Antibody (Center) - Additional Information****Gene ID** 373863**Other Names**

Dead end protein homolog 1, RNA-binding motif, single-stranded-interacting protein 4, DND1, RBMS4

**Target/Specificity**

This DND1 antibody is generated from rabbits immunized with a KLH conjugated synthetic peptide between 198-226 amino acids from the Central region of human DND1.

**Dilution**

WB~~1:1000

**Format**

Purified polyclonal antibody supplied in PBS with 0.09% (W/V) sodium azide. This antibody is purified through a protein A column, followed by peptide affinity purification.

**Storage**

Maintain refrigerated at 2-8°C for up to 2 weeks. For long term storage store at -20°C in small aliquots to prevent freeze-thaw cycles.

**Precautions**

DND1 Antibody (Center) is for research use only and not for use in diagnostic or therapeutic procedures.

**DND1 Antibody (Center) - Protein Information****Name** DND1**Synonyms** RBMS4

**Function** RNA-binding factor that positively regulates gene expression by prohibiting miRNA-mediated gene suppression. Relieves miRNA repression in germline cells (By similarity). Prohibits the function of several miRNAs by blocking the accessibility of target mRNAs. Sequence-specific RNA-binding factor that binds specifically to U-rich regions (URRs) in the 3' untranslated region (3'-UTR) of several mRNAs. Does not bind to miRNAs. May play a role during primordial germ cell (PGC) survival (By similarity). However, does not seem to be essential for PGC migration (By similarity).

#### **Cellular Location**

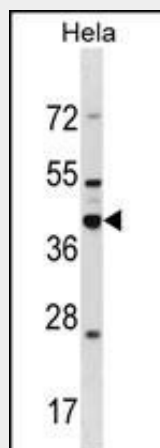
Nucleus. Cytoplasm. Note=Perinuclear germ granules, also called germ plasm or chromatoid body. Colocalizes in perinuclear sites with APOBEC3 (By similarity).

#### **DND1 Antibody (Center) - Protocols**

Provided below are standard protocols that you may find useful for product applications.

- [Western Blot](#)
- [Blocking Peptides](#)
- [Dot Blot](#)
- [Immunohistochemistry](#)
- [Immunofluorescence](#)
- [Immunoprecipitation](#)
- [Flow Cytometry](#)
- [Cell Culture](#)

#### **DND1 Antibody (Center) - Images**



DND1 Antibody (Center) (Cat. #AP16527c) western blot analysis in HeLa cell line lysates (35ug/lane). This demonstrates the DND1 antibody detected the DND1 protein (arrow).

#### **DND1 Antibody (Center) - Background**

This gene encodes a protein that binds to microRNA-targeting sequences of mRNAs, inhibiting microRNA-mediated repression. Reduced expression of this gene has been implicated in tongue squamous cell carcinoma. Two pseudogenes of this gene are located on the long arm of chromosome 17.

#### **DND1 Antibody (Center) - References**

Liu, X., et al. FEBS Lett. 584(18):4115-4120(2010)  
Sijmons, R.H., et al. Fam. Cancer 9(3):439-442(2010)  
Kedde, M., et al. Cell Cycle 7(7):899-903(2008)  
Linger, R., et al. Genes Chromosomes Cancer 47(3):247-252(2008)  
Ketting, R.F. Cell 131(7):1226-1227(2007)