

**TSC22D2 Antibody (N-term)**  
**Affinity Purified Rabbit Polyclonal Antibody (Pab)**  
**Catalog # AP16530A****Specification**

---

**TSC22D2 Antibody (N-term) - Product Information**

Application	IF, WB,E
Primary Accession	<a href="#">O75157</a>
Other Accession	<a href="#">NP_055594.1</a>
Reactivity	Human
Host	Rabbit
Clonality	Polyclonal
Isotype	Rabbit IgG
Calculated MW	79228
Antigen Region	34-62

**TSC22D2 Antibody (N-term) - Additional Information****Gene ID** 9819**Other Names**

TSC22 domain family protein 2, TSC22-related-inducible leucine zipper protein 4, TSC22D2, KIAA0669, TILZ4

**Target/Specificity**

This TSC22D2 antibody is generated from rabbits immunized with a KLH conjugated synthetic peptide between 34-62 amino acids from the N-terminal region of human TSC22D2.

**Dilution**

IF~~1:10~50

WB~~1:1000

**Format**

Purified polyclonal antibody supplied in PBS with 0.09% (W/V) sodium azide. This antibody is purified through a protein A column, followed by peptide affinity purification.

**Storage**

Maintain refrigerated at 2-8°C for up to 2 weeks. For long term storage store at -20°C in small aliquots to prevent freeze-thaw cycles.

**Precautions**

TSC22D2 Antibody (N-term) is for research use only and not for use in diagnostic or therapeutic procedures.

**TSC22D2 Antibody (N-term) - Protein Information****Name** TSC22D2 ([HGNC:29095](#))

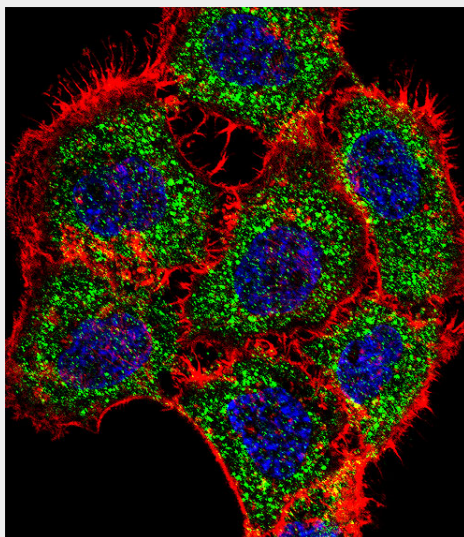
**Function** Reduces the level of nuclear PKM isoform M2 which results in repression of cyclin CCND1 transcription and reduced cell growth.

### **TSC22D2 Antibody (N-term) - Protocols**

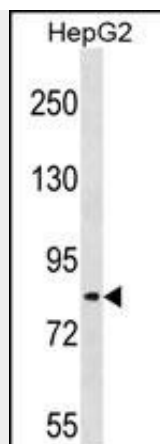
Provided below are standard protocols that you may find useful for product applications.

- [Western Blot](#)
- [Blocking Peptides](#)
- [Dot Blot](#)
- [Immunohistochemistry](#)
- [Immunofluorescence](#)
- [Immunoprecipitation](#)
- [Flow Cytometry](#)
- [Cell Culture](#)

### **TSC22D2 Antibody (N-term) - Images**



Fluorescent confocal image of A431 cell stained with TSC22D2 Antibody (N-term)(Cat#AP16530a).A431 cells were fixed with 4% PFA (20 min), permeabilized with Triton X-100 (0.1%, 10 min), then incubated with TSC22D2 primary antibody (1:25, 1 h at 37°C). For secondary antibody, Alexa Fluor® 488 conjugated donkey anti-rabbit antibody (green) was used (1:400, 50 min at 37°C).Cytoplasmic actin was counterstained with Alexa Fluor® 555 (red) conjugated Phalloidin (7units/ml, 1 h at 37°C). Nuclei were counterstained with DAPI (blue) (10 µg/ml, 10 min). TSC22D2 immunoreactivity is localized to Cytoplasm significantly.



TSC22D2 Antibody (N-term) (Cat. #AP16530a) western blot analysis in HepG2 cell line lysates (35ug/lane). This demonstrates the TSC22D2 antibody detected the TSC22D2 protein (arrow).

#### **TSC22D2 Antibody (N-term) - Background**

TSC22D2 belongs to the TSC-22/Dip/Bun family and the function remains unknown.

#### **TSC22D2 Antibody (N-term) - References**

Gluderer, S., et al. J. Biol. 9 (1), 9 (2010) :  
Gevaert, K., et al. Nat. Biotechnol. 21(5):566-569(2003)  
Gevaert, K., et al. Nat. Biotechnol. 21(5):566-569(2003)