

PLEKHF1 Antibody (N-term)
Affinity Purified Rabbit Polyclonal Antibody (Pab)
Catalog # AP16531a

Specification

PLEKHF1 Antibody (N-term) - Product Information

Application	WB,E
Primary Accession	O96S99
Other Accession	NP_077286.3
Reactivity	Human
Host	Rabbit
Clonality	Polyclonal
Isotype	Rabbit IgG
Calculated MW	31195
Antigen Region	51-79

PLEKHF1 Antibody (N-term) - Additional Information

Gene ID 79156

Other Names

Pleckstrin homology domain-containing family F member 1, PH domain-containing family F member 1, Lysosome-associated apoptosis-inducing protein containing PH and FYVE domains, Apoptosis-inducing protein, PH and FYVE domain-containing protein 1, Phafin-1, Zinc finger FYVE domain-containing protein 15, PLEKHF1, APPD, LAPF, ZFYVE15

Target/Specificity

This PLEKHF1 antibody is generated from rabbits immunized with a KLH conjugated synthetic peptide between 51-79 amino acids from the N-terminal region of human PLEKHF1.

Dilution

WB~~1:1000

E~~Use at an assay dependent concentration.

Format

Purified polyclonal antibody supplied in PBS with 0.09% (W/V) sodium azide. This antibody is purified through a protein A column, followed by peptide affinity purification.

Storage

Maintain refrigerated at 2-8°C for up to 2 weeks. For long term storage store at -20°C in small aliquots to prevent freeze-thaw cycles.

Precautions

PLEKHF1 Antibody (N-term) is for research use only and not for use in diagnostic or therapeutic procedures.

PLEKHF1 Antibody (N-term) - Protein Information

Name PLEKHF1

Synonyms APPD, LAPF, ZFYVE15

Function May induce apoptosis through the lysosomal-mitochondrial pathway. Translocates to the lysosome initiating the permeabilization of lysosomal membrane (LMP) and resulting in the release of CTSD and CTSB to the cytoplasm. Triggers the caspase-independent apoptosis by altering mitochondrial membrane permeabilization (MMP) resulting in the release of PDCD8.

Cellular Location

Nucleus. Cytoplasm, perinuclear region. Lysosome. Note=Translocates to lysosome during apoptosis

Tissue Location

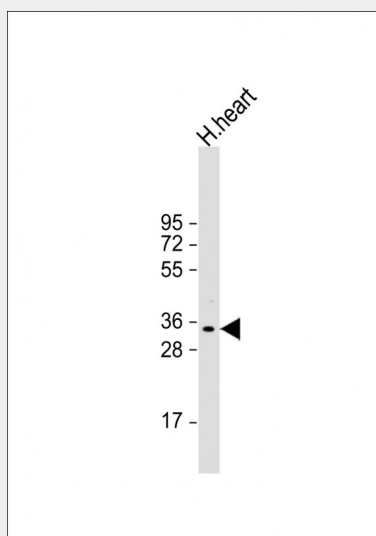
Highly expressed in heart and skeletal muscle. Weakly expressed in brain, thymus, spleen, kidney, liver, small intestine, placenta and lung.

PLEKHF1 Antibody (N-term) - Protocols

Provided below are standard protocols that you may find useful for product applications.

- [Western Blot](#)
- [Blocking Peptides](#)
- [Dot Blot](#)
- [Immunohistochemistry](#)
- [Immunofluorescence](#)
- [Immunoprecipitation](#)
- [Flow Cytometry](#)
- [Cell Culture](#)

PLEKHF1 Antibody (N-term) - Images



Anti-PLEKHF1 Antibody (N-term) at 1:1000 dilution + human heart lysate Lysates/proteins at 20 µg per lane. Secondary Goat Anti-Rabbit IgG, (H+L), Peroxidase conjugated at 1/10000 dilution. Predicted band size : 31 kDa Blocking/Dilution buffer: 5% NFD/BSA.

PLEKHF1 Antibody (N-term) - Background

PLEKHF1 may induce apoptosis through the lysosomal-mitochondrial pathway. Translocates to the lysosome initiating the permeabilization of lysosomal membrane (LMP) and resulting in the release of CTSD and CTSL to the cytoplasm. Triggers the caspase-independent apoptosis by altering mitochondrial membrane permeabilization (MMP) resulting in the release of PDCD8.

PLEKHF1 Antibody (N-term) - References

Chen, W., et al. J. Biol. Chem. 280(49):40985-40995(2005)