

GPR37L1 Antibody (N-term)
Affinity Purified Rabbit Polyclonal Antibody (Pab)
Catalog # AP16532a

Specification

GPR37L1 Antibody (N-term) - Product Information

Application	WB,E
Primary Accession	O60883
Other Accession	NP_004758.3
Reactivity	Human
Host	Rabbit
Clonality	Polyclonal
Isotype	Rabbit IgG
Calculated MW	52771
Antigen Region	44-72

GPR37L1 Antibody (N-term) - Additional Information

Gene ID 9283

Other Names

Prosaposin receptor GPR37L1, Endothelin B receptor-like protein 2, ETBR-LP-2, G-protein coupled receptor 37-like 1, GPR37L1, ETBRLP2

Target/Specificity

This GPR37L1 antibody is generated from rabbits immunized with a KLH conjugated synthetic peptide between 44-72 amino acids from the N-terminal region of human GPR37L1.

Dilution

WB~~1:1000

E~~Use at an assay dependent concentration.

Format

Purified polyclonal antibody supplied in PBS with 0.09% (W/V) sodium azide. This antibody is purified through a protein A column, followed by peptide affinity purification.

Storage

Maintain refrigerated at 2-8°C for up to 2 weeks. For long term storage store at -20°C in small aliquots to prevent freeze-thaw cycles.

Precautions

GPR37L1 Antibody (N-term) is for research use only and not for use in diagnostic or therapeutic procedures.

GPR37L1 Antibody (N-term) - Protein Information

Name GPR37L1

Synonyms ETBRLP2

Function G-protein coupled receptor (PubMed:[27072655](#)). Has been shown to bind the neuroprotective and glioprotective factor prosaposin (PSAP), leading to endocytosis followed by an ERK phosphorylation cascade (PubMed:[23690594](#)). However, other studies have shown that prosaposin does not increase activity (PubMed:[27072655](#), PubMed:[28688853](#)). It has been suggested that GPR37L1 is a constitutively active receptor which signals through the guanine nucleotide-binding protein G(s) subunit alpha (PubMed:[27072655](#)). Participates in the regulation of postnatal cerebellar development by modulating the Shh pathway (By similarity). Regulates baseline blood pressure in females and protects against cardiovascular stress in males (By similarity). Mediates inhibition of astrocyte glutamate transporters and reduction in neuronal N-methyl-D-aspartate receptor activity (By similarity).

Cellular Location

Cell membrane; Multi-pass membrane protein. Cell projection, cilium membrane {ECO:0000250|UniProtKB:Q99JG2}; Multi-pass membrane protein. Note=Associates with the basal membrane of Bergmann glia cell primary cilia. {ECO:0000250|UniProtKB:Q99JG2}

Tissue Location

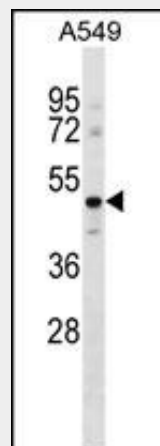
Expressed in primary cortical astrocytes (at protein level) (PubMed:23690594). Expressed in the central nervous system (PubMed:9539149).

GPR37L1 Antibody (N-term) - Protocols

Provided below are standard protocols that you may find useful for product applications.

- [Western Blot](#)
- [Blocking Peptides](#)
- [Dot Blot](#)
- [Immunohistochemistry](#)
- [Immunofluorescence](#)
- [Immunoprecipitation](#)
- [Flow Cytometry](#)
- [Cell Culture](#)

GPR37L1 Antibody (N-term) - Images



GPR37L1 Antibody (N-term) (Cat. #AP16532a) western blot analysis in A549 cell line lysates (35ug/lane). This demonstrates the GPR37L1 antibody detected the GPR37L1 protein (arrow).

GPR37L1 Antibody (N-term) - Background

GPR37L1 is orphan receptor.

GPR37L1 Antibody (N-term) - References

Davila, S., et al. Genes Immun. 11(3):232-238(2010)
Arking, D.E., et al. PLoS ONE 5 (3), E9879 (2010) :
Valdenaire, O., et al. FEBS Lett. 424(3):193-196(1998)