

STAR Antibody (Center)
Affinity Purified Rabbit Polyclonal Antibody (Pab)
Catalog # AP16547c**Specification**

STAR Antibody (Center) - Product Information

Application	WB,E
Primary Accession	P49675
Other Accession	NP_000340.2
Reactivity	Human
Host	Rabbit
Clonality	Polyclonal
Isotype	Rabbit IgG
Calculated MW	31914
Antigen Region	88-117

STAR Antibody (Center) - Additional Information**Gene ID** 6770**Other Names**

Steroidogenic acute regulatory protein, mitochondrial, StAR, START domain-containing protein 1, StARD1, STAR, STARD1

Target/Specificity

This STAR antibody is generated from rabbits immunized with a KLH conjugated synthetic peptide between 88-117 amino acids from the Central region of human STAR.

Dilution

WB~~1:1000

E~~Use at an assay dependent concentration.

Format

Purified polyclonal antibody supplied in PBS with 0.09% (W/V) sodium azide. This antibody is purified through a protein A column, followed by peptide affinity purification.

Storage

Maintain refrigerated at 2-8°C for up to 2 weeks. For long term storage store at -20°C in small aliquots to prevent freeze-thaw cycles.

Precautions

STAR Antibody (Center) is for research use only and not for use in diagnostic or therapeutic procedures.

STAR Antibody (Center) - Protein Information**Name** STAR

Synonyms STARD1

Function Plays a key role in steroid hormone synthesis by enhancing the metabolism of cholesterol into pregnenolone. Mediates the transfer of cholesterol from the outer mitochondrial membrane to the inner mitochondrial membrane where it is cleaved to pregnenolone.

Cellular Location

Mitochondrion {ECO:0000250|UniProtKB:P51557}.

Tissue Location

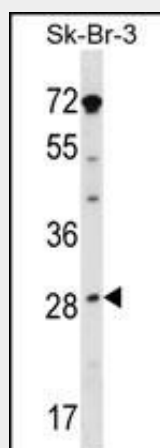
Expressed in gonads, adrenal cortex and kidney.

STAR Antibody (Center) - Protocols

Provided below are standard protocols that you may find useful for product applications.

- [Western Blot](#)
- [Blocking Peptides](#)
- [Dot Blot](#)
- [Immunohistochemistry](#)
- [Immunofluorescence](#)
- [Immunoprecipitation](#)
- [Flow Cytometry](#)
- [Cell Culture](#)

STAR Antibody (Center) - Images



STAR Antibody (Center) (Cat. #AP16547c) western blot analysis in SK-BR-3 cell line lysates (35ug/lane). This demonstrates the STAR antibody detected the STAR protein (arrow).

STAR Antibody (Center) - Background

The protein encoded by this gene plays a key role in the acute regulation of steroid hormone synthesis by enhancing the conversion of cholesterol into pregnenolone. This protein permits the cleavage of cholesterol into pregnenolone by mediating the transport of cholesterol from the outer mitochondrial membrane to the inner mitochondrial membrane. Mutations in this gene are a cause of congenital lipid adrenal hyperplasia (CLAH), also called lipid CAH. A pseudogene of this gene is located on chromosome 13.

STAR Antibody (Center) - References

Shi, F.T., et al. J. Clin. Endocrinol. Metab. 95 (10), E172-E180 (2010) :
Bailey, S.D., et al. Diabetes Care 33(10):2250-2253(2010)
Mizutani, T., et al. J. Biol. Chem. 285(36):28240-28251(2010)
Sahakitrungruang, T., et al. J. Clin. Endocrinol. Metab. 95(7):3352-3359(2010)
Rose, J.E., et al. Mol. Med. 16 (7-8), 247-253 (2010) :