

**CCDC141 Antibody (N-term)**  
**Affinity Purified Rabbit Polyclonal Antibody (Pab)**  
**Catalog # AP16548a****Specification**

---

**CCDC141 Antibody (N-term) - Product Information**

Application	WB,E
Primary Accession	<a href="#">Q6ZP82</a>
Other Accession	<a href="#">NP_775919.2</a>
Reactivity	Human
Host	Rabbit
Clonality	Polyclonal
Isotype	Rabbit IgG
Calculated MW	175067
Antigen Region	1-30

**CCDC141 Antibody (N-term) - Additional Information****Gene ID** 285025**Other Names**

Coiled-coil domain-containing protein 141, Coiled-coil protein associated with myosin II and DISC1, CCDC141, CAMDI {ECO:0000303|PubMed:20956536}

**Target/Specificity**

This CCDC141 antibody is generated from rabbits immunized with a KLH conjugated synthetic peptide between 1-30 amino acids from the N-terminal region of human CCDC141.

**Dilution**

WB~~1:1000

**Format**

Purified polyclonal antibody supplied in PBS with 0.09% (W/V) sodium azide. This antibody is purified through a protein A column, followed by peptide affinity purification.

**Storage**

Maintain refrigerated at 2-8°C for up to 2 weeks. For long term storage store at -20°C in small aliquots to prevent freeze-thaw cycles.

**Precautions**

CCDC141 Antibody (N-term) is for research use only and not for use in diagnostic or therapeutic procedures.

**CCDC141 Antibody (N-term) - Protein Information****Name** CCDC141**Synonyms** CAMDI {ECO:0000303|PubMed:20956536}

**Function** Plays a critical role in cortical radial and GnRH neurons migration during brain development. Regulates cortical radial migration by negatively controlling the activity of histone deacetylase 6 (HDAC6) and promotes centrosome maturation. CAMDI is required for dilation formation of cortical neurons during radial migration. Plays a critical role in learning and memory performance through regulation of AMPA- selective glutamate receptors (AMPA) cell surface expression in competition with KIBRA.

#### **Cellular Location**

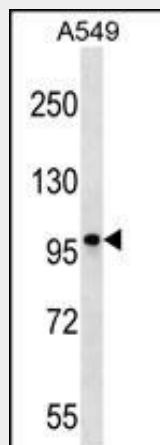
Cytoplasm {ECO:0000250|UniProtKB:E9Q8Q6}. Cytoplasm, cytoskeleton, microtubule organizing center, centrosome {ECO:0000250|UniProtKB:E9Q8Q6}. Note=Co-localized with DISC1 at/around the centrosome. Localizes to the centrosome, at least in part, in a DISC1-dependent manner. Accumulates and oscillates at the dilation in cortical neurons during migration. CAMDI protein level is stabilized at the G1 phase and destabilized at the G2 /M phase {ECO:0000250|UniProtKB:E9Q8Q6}

#### **CCDC141 Antibody (N-term) - Protocols**

Provided below are standard protocols that you may find useful for product applications.

- [Western Blot](#)
- [Blocking Peptides](#)
- [Dot Blot](#)
- [Immunohistochemistry](#)
- [Immunofluorescence](#)
- [Immunoprecipitation](#)
- [Flow Cytometry](#)
- [Cell Culture](#)

#### **CCDC141 Antibody (N-term) - Images**



CCDC141 Antibody (N-term) (Cat. #AP16548a) western blot analysis in A549 cell line lysates (35ug/lane). This demonstrates the CCDC141 antibody detected the CCDC141 protein (arrow).

#### **CCDC141 Antibody (N-term) - References**

Ehret, G.B., et al. Eur. J. Hum. Genet. 17(12):1650-1657(2009)  
Morris, J.A., et al. Hum. Mol. Genet. 12(13):1591-1608(2003)