

WNT6 Antibody (Center)
Affinity Purified Rabbit Polyclonal Antibody (Pab)
Catalog # AP16552c**Specification**

WNT6 Antibody (Center) - Product Information

Application	WB,E
Primary Accession	O9Y6F9
Other Accession	NP_006513.1
Reactivity	Human
Host	Rabbit
Clonality	Polyclonal
Isotype	Rabbit IgG
Calculated MW	39721
Antigen Region	173-201

WNT6 Antibody (Center) - Additional Information**Gene ID** 7475**Other Names**

Protein Wnt-6, WNT6

Target/Specificity

This WNT6 antibody is generated from rabbits immunized with a KLH conjugated synthetic peptide between 173-201 amino acids from the Central region of human WNT6.

Dilution

WB~~1:1000

E~~Use at an assay dependent concentration.

Format

Purified polyclonal antibody supplied in PBS with 0.09% (W/V) sodium azide. This antibody is purified through a protein A column, followed by peptide affinity purification.

Storage

Maintain refrigerated at 2-8°C for up to 2 weeks. For long term storage store at -20°C in small aliquots to prevent freeze-thaw cycles.

Precautions

WNT6 Antibody (Center) is for research use only and not for use in diagnostic or therapeutic procedures.

WNT6 Antibody (Center) - Protein Information**Name** WNT6**Function** Ligand for members of the frizzled family of seven transmembrane receptors. Probable

developmental protein. May be a signaling molecule which affects the development of discrete regions of tissues. Is likely to signal over only few cell diameters. Together with CAV1 may promote chemoresistance of gastric cancer cells to DNA- damaging anthracycline drugs through the activation of the canonical Wnt receptor signaling pathway.

Cellular Location

Secreted, extracellular space, extracellular matrix

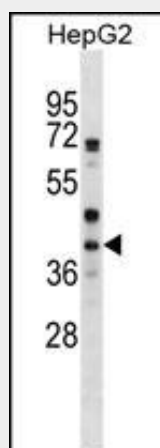
Tissue Location

Expressed in gastric cancer cell lines and gastric cancer tissues (at protein level). Detected in the apical gland region of the gastric foveolar epithelium (at protein level)

WNT6 Antibody (Center) - Protocols

Provided below are standard protocols that you may find useful for product applications.

- [Western Blot](#)
- [Blocking Peptides](#)
- [Dot Blot](#)
- [Immunohistochemistry](#)
- [Immunofluorescence](#)
- [Immunoprecipitation](#)
- [Flow Cytometry](#)
- [Cell Culture](#)

WNT6 Antibody (Center) - Images

WNT6 Antibody (Center) (Cat. #AP16552c) western blot analysis in HepG2 cell line lysates (35ug/lane). This demonstrates the WNT6 antibody detected the WNT6 protein (arrow).

WNT6 Antibody (Center) - Background

The WNT gene family consists of structurally related genes which encode secreted signaling proteins. These proteins have been implicated in oncogenesis and in several developmental processes, including regulation of cell fate and patterning during embryogenesis. This gene is a member of the WNT gene family. It is overexpressed in cervical cancer cell line and strongly coexpressed with another family member, WNT10A, in colorectal cancer cell line. The gene overexpression may play key roles in carcinogenesis. This

gene and the WNT10A gene are clustered in the chromosome 2q35 region. The protein encoded by this gene is 97% identical to the mouse Wnt6 protein at the amino acid level.

WNT6 Antibody (Center) - References

Wang, C., et al. J Endod 36(2):238-243(2010)
Jugessur, A., et al. PLoS ONE 5 (7), E11493 (2010) :
Adaimy, L., et al. Am. J. Hum. Genet. 81(4):821-828(2007)
Beaty, T.H., et al. Hum. Genet. 120(4):501-518(2006)
Fokina, V.M., et al. Dev. Dyn. 235(2):496-505(2006)

WNT6 Antibody (Center) - Citations

- [Wnt6 influences the viability of mouse embryonic palatal mesenchymal cells via the \$\beta\$ -catenin pathway.](#)