

DEF6 Antibody (C-term)
Affinity Purified Rabbit Polyclonal Antibody (Pab)
Catalog # AP16557b**Specification**

DEF6 Antibody (C-term) - Product Information

Application	WB,E
Primary Accession	O9H4E7
Other Accession	O8C2K1 , NP_071330.3
Reactivity	Human
Predicted	Mouse
Host	Rabbit
Clonality	Polyclonal
Isotype	Rabbit IgG
Calculated MW	73910
Antigen Region	500-528

DEF6 Antibody (C-term) - Additional Information**Gene ID** 50619**Other Names**

Differentially expressed in FDCP 6 homolog, DEF-6, IRF4-binding protein, DEF6, IBP

Target/Specificity

This DEF6 antibody is generated from rabbits immunized with a KLH conjugated synthetic peptide between 500-528 amino acids from the C-terminal region of human DEF6.

Dilution

WB~~1:1000

E~~Use at an assay dependent concentration.

Format

Purified polyclonal antibody supplied in PBS with 0.09% (W/V) sodium azide. This antibody is purified through a protein A column, followed by peptide affinity purification.

Storage

Maintain refrigerated at 2-8°C for up to 2 weeks. For long term storage store at -20°C in small aliquots to prevent freeze-thaw cycles.

Precautions

DEF6 Antibody (C-term) is for research use only and not for use in diagnostic or therapeutic procedures.

DEF6 Antibody (C-term) - Protein Information**Name** DEF6

Synonyms IBP

Function Phosphatidylinositol 3,4,5-trisphosphate-dependent guanine nucleotide exchange factor (GEF) which plays a role in the activation of Rho GTPases RAC1, RhoA and CDC42 (PubMed:[12651066](#), PubMed:[15023524](#)). Can regulate cell morphology in cooperation with activated RAC1 (By similarity). Involved in immune homeostasis by ensuring proper trafficking and availability of T-cell regulator CTLA-4 at T-cell surface (PubMed:[31308374](#)). Plays a role in Th2 (T helper cells) development and/or activation, perhaps by interfering with ZAP70 signaling (By similarity).

Cellular Location

Cytoplasm. Cell membrane Nucleus. Cytoplasm, cytoskeleton. Cytoplasm, perinuclear region. Cell projection, filopodium. Note=Recruited to the plasma membrane upon binding phosphatidylinositol 3,4,5-trisphosphate (PubMed:15023524). Binds to actin filaments (PubMed:15023524)

Tissue Location

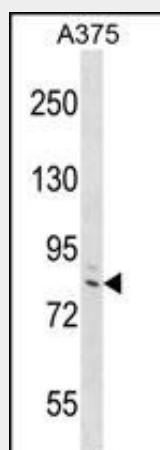
Broadly expressed in the immune system. Highly expressed in T cells (PubMed:31308374).

DEF6 Antibody (C-term) - Protocols

Provided below are standard protocols that you may find useful for product applications.

- [Western Blot](#)
- [Blocking Peptides](#)
- [Dot Blot](#)
- [Immunohistochemistry](#)
- [Immunofluorescence](#)
- [Immunoprecipitation](#)
- [Flow Cytometry](#)
- [Cell Culture](#)

DEF6 Antibody (C-term) - Images



DEF6 Antibody (C-term) (Cat. #AP16557b) western blot analysis in A375 cell line lysates (35ug/lane). This demonstrates the DEF6 antibody detected the DEF6 protein (arrow).

DEF6 Antibody (C-term) - Background

DEF6, or IBP, is a guanine nucleotide exchange factor

(GEF) for RAC (MIM 602048) and CDC42 (MIM 116952) that is highly expressed in B and T cells (Gupta et al., 2003 [PubMed 12923183]).

DEF6 Antibody (C-term) - References

Han, S., et al. Hum. Immunol. 71(7):727-730(2010)
Rajaraman, P., et al. Cancer Epidemiol. Biomarkers Prev. 19(5):1356-1361(2010)
Zhao, J., et al. BMC Med. Genet. 11, 96 (2010) :
Zhang, Z., et al. Cancer Epidemiol 33(2):130-136(2009)
Rajaraman, P., et al. Cancer Epidemiol. Biomarkers Prev. 18(5):1651-1658(2009)