

SLITRK2 Antibody (C-term)
Affinity Purified Rabbit Polyclonal Antibody (Pab)
Catalog # AP16558b**Specification**

SLITRK2 Antibody (C-term) - Product Information

Application	WB,E
Primary Accession	Q9H156
Other Accession	Q810C0 , NP_115928.1
Reactivity	Human
Predicted	Mouse
Host	Rabbit
Clonality	Polyclonal
Isotype	Rabbit IgG
Calculated MW	95404
Antigen Region	773-801

SLITRK2 Antibody (C-term) - Additional Information**Gene ID** 84631**Other Names**

SLIT and NTRK-like protein 2, SLITRK2, CXorf2, KIAA1854, SLITL1

Target/Specificity

This SLITRK2 antibody is generated from rabbits immunized with a KLH conjugated synthetic peptide between 773-801 amino acids from the C-terminal region of human SLITRK2.

Dilution

WB~~1:1000

Format

Purified polyclonal antibody supplied in PBS with 0.09% (W/V) sodium azide. This antibody is purified through a protein A column, followed by peptide affinity purification.

Storage

Maintain refrigerated at 2-8°C for up to 2 weeks. For long term storage store at -20°C in small aliquots to prevent freeze-thaw cycles.

Precautions

SLITRK2 Antibody (C-term) is for research use only and not for use in diagnostic or therapeutic procedures.

SLITRK2 Antibody (C-term) - Protein Information**Name** SLITRK2**Synonyms** CXorf2, KIAA1854, SLITL1

Function It is involved in synaptogenesis and promotes excitatory synapse differentiation (PubMed:[27273464](#), PubMed:[27812321](#), PubMed:[35840571](#)). Suppresses neurite outgrowth (By similarity). Involved in the negative regulation of NTRK2 (PubMed:[35840571](#)).

Cellular Location

Membrane; Single-pass type I membrane protein. Cell membrane. Cell projection, dendrite

Tissue Location

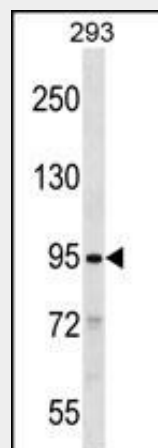
Expressed predominantly in the cerebral cortex of the brain but also at low levels in the spinal cord and medulla. Also expressed in some astrocytic brain tumors such as astrocytomas, oligodendrogliomas, glioblastomas, gangliogliomas and primitive neuroectodermal tumors.

SLITRK2 Antibody (C-term) - Protocols

Provided below are standard protocols that you may find useful for product applications.

- [Western Blot](#)
- [Blocking Peptides](#)
- [Dot Blot](#)
- [Immunohistochemistry](#)
- [Immunofluorescence](#)
- [Immunoprecipitation](#)
- [Flow Cytometry](#)
- [Cell Culture](#)

SLITRK2 Antibody (C-term) - Images



SLITRK2 Antibody (C-term) (Cat. #AP16558b) western blot analysis in 293 cell line lysates (35ug/lane). This demonstrates the SLITRK2 antibody detected the SLITRK2 protein (arrow).

SLITRK2 Antibody (C-term) - Background

This gene encodes an integral membrane protein that contains two N-terminal leucine-rich repeats domains and contains C-terminal regions similar to neurotrophin receptors. The encoded protein may play a role in modulating neurite activity. Alternatively spliced transcript variants encoding the same protein have been described.

SLITRK2 Antibody (C-term) - References

Piton, A., et al. Mol. Psychiatry (2010) In press :
Davila, S., et al. Genes Immun. 11(3):232-238(2010)
Smith, E.N., et al. Mol. Psychiatry 14(8):755-763(2009)
Aruga, J., et al. Gene 315, 87-94 (2003) :