

RAD52 Antibody (Center)
Affinity Purified Rabbit Polyclonal Antibody (Pab)
Catalog # AP16562c**Specification**

RAD52 Antibody (Center) - Product Information

Application	WB,E
Primary Accession	P43351
Other Accession	NP_602296.2
Reactivity	Human
Host	Rabbit
Clonality	Polyclonal
Isotype	Rabbit IgG
Calculated MW	46169
Antigen Region	177-205

RAD52 Antibody (Center) - Additional Information**Gene ID** 5893**Other Names**

DNA repair protein RAD52 homolog, RAD52

Target/Specificity

This RAD52 antibody is generated from rabbits immunized with a KLH conjugated synthetic peptide between 177-205 amino acids from the Central region of human RAD52.

Dilution

WB~~1:1000

E~~Use at an assay dependent concentration.

Format

Purified polyclonal antibody supplied in PBS with 0.09% (W/V) sodium azide. This antibody is purified through a protein A column, followed by peptide affinity purification.

Storage

Maintain refrigerated at 2-8°C for up to 2 weeks. For long term storage store at -20°C in small aliquots to prevent freeze-thaw cycles.

Precautions

RAD52 Antibody (Center) is for research use only and not for use in diagnostic or therapeutic procedures.

RAD52 Antibody (Center) - Protein Information**Name** RAD52**Function** Involved in double-stranded break repair. Plays a central role in genetic recombination

and DNA repair by promoting the annealing of complementary single-stranded DNA and by stimulation of the RAD51 recombinase.

Cellular Location

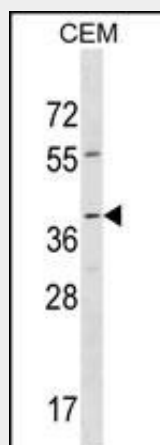
Nucleus.

RAD52 Antibody (Center) - Protocols

Provided below are standard protocols that you may find useful for product applications.

- [Western Blot](#)
- [Blocking Peptides](#)
- [Dot Blot](#)
- [Immunohistochemistry](#)
- [Immunofluorescence](#)
- [Immunoprecipitation](#)
- [Flow Cytometry](#)
- [Cell Culture](#)

RAD52 Antibody (Center) - Images



RAD52 Antibody (Center) (Cat. #AP16562c) western blot analysis in CEM cell line lysates (35ug/lane). This demonstrates the RAD52 antibody detected the RAD52 protein (arrow).

RAD52 Antibody (Center) - Background

The protein encoded by this gene shares similarity with *Saccharomyces cerevisiae* Rad52, a protein important for DNA double-strand break repair and homologous recombination. This gene product was shown to bind single-stranded DNA ends, and mediate the DNA-DNA interaction necessary for the annealing of complementary DNA strands. It was also found to interact with DNA recombination protein RAD51, which suggested its role in RAD51 related DNA recombination and repair.

RAD52 Antibody (Center) - References

Liu, Y., et al. *Carcinogenesis* 31(10):1762-1769(2010)
Ho-Pun-Cheung, A., et al. *Pharmacogenomics J.* (2010) In press :
Briggs, F.B., et al. *Am. J. Epidemiol.* 172(2):217-224(2010)

Liu, C.Y., et al. Carcinogenesis 31(7):1259-1263(2010)

Monsees, G.M., et al. Breast Cancer Res. Treat. (2010) In press :