

**SSC5D Antibody (Center)**  
**Affinity Purified Rabbit Polyclonal Antibody (Pab)**  
**Catalog # AP16565C****Specification**

---

**SSC5D Antibody (Center) - Product Information**

Application	WB,E
Primary Accession	<a href="#">A1L4H1</a>
Other Accession	<a href="#">NP_001138422.1</a>
Reactivity	Human
Host	Rabbit
Clonality	Polyclonal
Isotype	Rabbit IgG
Calculated MW	165743
Antigen Region	869-897

**SSC5D Antibody (Center) - Additional Information****Gene ID** 284297**Other Names**

Soluble scavenger receptor cysteine-rich domain-containing protein SSC5D, Soluble scavenger protein with 5 SRCR domains, SSc5D, SSC5D

**Target/Specificity**

This SSC5D antibody is generated from rabbits immunized with a KLH conjugated synthetic peptide between 869-897 amino acids from the Central region of human SSC5D.

**Dilution**

WB~~1:1000

**Format**

Purified polyclonal antibody supplied in PBS with 0.09% (W/V) sodium azide. This antibody is purified through a protein A column, followed by peptide affinity purification.

**Storage**

Maintain refrigerated at 2-8°C for up to 2 weeks. For long term storage store at -20°C in small aliquots to prevent freeze-thaw cycles.

**Precautions**

SSC5D Antibody (Center) is for research use only and not for use in diagnostic or therapeutic procedures.

**SSC5D Antibody (Center) - Protein Information****Name** SSC5D**Function** Binds to extracellular matrix proteins. Binds to pathogen- associated molecular patterns

(PAMPs) present on the cell walls of Gram-positive and Gram-negative bacteria and fungi, behaving as a pattern recognition receptor (PRR). Induces bacterial and fungal aggregation and subsequent inhibition of PAMP-induced cytokine release. Does not possess intrinsic bactericidal activity. May play a role in the innate defense and homeostasis of certain epithelial surfaces (By similarity).

**Cellular Location**

Secreted. Cytoplasm.

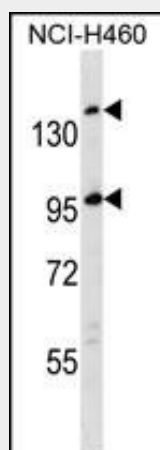
**Tissue Location**

Highly expressed in monocytes/macrophages and T- lymphocytes. Highly expressed in placenta and spleen, and also detected at lower levels in colon, and more weakly in lung, heart and kidney

**SSC5D Antibody (Center) - Protocols**

Provided below are standard protocols that you may find useful for product applications.

- [Western Blot](#)
- [Blocking Peptides](#)
- [Dot Blot](#)
- [Immunohistochemistry](#)
- [Immunofluorescence](#)
- [Immunoprecipitation](#)
- [Flow Cytometry](#)
- [Cell Culture](#)

**SSC5D Antibody (Center) - Images**

SSC5D Antibody (Cat. #AP16565c) western blot analysis in NCI-H460 cell line lysates (35ug/lane). This demonstrates the SSC5D antibody detected the SSC5D protein (arrow).

**SSC5D Antibody (Center) - References**

Goncalves, C.M., et al. Mol. Immunol. 46(13):2585-2596(2009)