

**FHOD1 Antibody (C-term)**  
**Affinity Purified Rabbit Polyclonal Antibody (Pab)**  
**Catalog # AP16586b**

**Specification**

---

**FHOD1 Antibody (C-term) - Product Information**

Application	WB,E
Primary Accession	<a href="#">O9Y613</a>
Other Accession	<a href="#">NP_037373.2</a>
Reactivity	Human, Mouse
Host	Rabbit
Clonality	Polyclonal
Isotype	Rabbit IgG
Calculated MW	126551
Antigen Region	985-1013

**FHOD1 Antibody (C-term) - Additional Information**

**Gene ID** 29109

**Other Names**

FH1/FH2 domain-containing protein 1, Formin homolog overexpressed in spleen 1, FHOS, Formin homology 2 domain-containing protein 1, FHOD1, FHOS, FHOS1

**Target/Specificity**

This FHOD1 antibody is generated from rabbits immunized with a KLH conjugated synthetic peptide between 985-1013 amino acids from the C-terminal region of human FHOD1.

**Dilution**

WB~~1:1000

**Format**

Purified polyclonal antibody supplied in PBS with 0.09% (W/V) sodium azide. This antibody is purified through a protein A column, followed by peptide affinity purification.

**Storage**

Maintain refrigerated at 2-8°C for up to 2 weeks. For long term storage store at -20°C in small aliquots to prevent freeze-thaw cycles.

**Precautions**

FHOD1 Antibody (C-term) is for research use only and not for use in diagnostic or therapeutic procedures.

**FHOD1 Antibody (C-term) - Protein Information**

**Name** FHOD1

**Synonyms** FHOS, FHOS1

**Function** Required for the assembly of F-actin structures, such as stress fibers. Depends on the Rho-ROCK cascade for its activity. Contributes to the coordination of microtubules with actin fibers and plays a role in cell elongation. Acts synergistically with ROCK1 to promote SRC-dependent non-apoptotic plasma membrane blebbing.

**Cellular Location**

Cytoplasm. Cytoplasm, cytoskeleton. Cell projection, bleb. Note=Predominantly cytoplasmic

**Tissue Location**

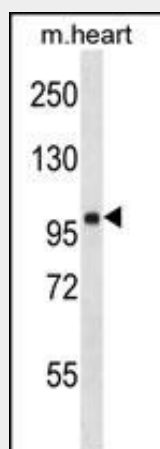
Ubiquitous. Highly expressed in spleen.

**FHOD1 Antibody (C-term) - Protocols**

Provided below are standard protocols that you may find useful for product applications.

- [Western Blot](#)
- [Blocking Peptides](#)
- [Dot Blot](#)
- [Immunohistochemistry](#)
- [Immunofluorescence](#)
- [Immunoprecipitation](#)
- [Flow Cytometry](#)
- [Cell Culture](#)

**FHOD1 Antibody (C-term) - Images**



FHOD1 Antibody (C-term) (Cat. #AP16586b) western blot analysis in mouse heart tissue lysates (35ug/lane). This demonstrates the FHOD1 antibody detected the FHOD1 protein (arrow).

**FHOD1 Antibody (C-term) - Background**

This gene encodes a protein which is a member of the formin/diaphanous family of proteins. The gene is ubiquitously expressed but is found in abundance in the spleen. The encoded protein has sequence homology to diaphanous and formin proteins within the Formin Homology (FH)1 and FH2 domains. It also contains a coiled-coil domain, a collagen-like domain, two nuclear localization signals, and several potential PKC and PKA phosphorylation sites. It is a predominantly cytoplasmic protein and is expressed in a variety of human cell lines. [provided by

RefSeq].

#### **FHOD1 Antibody (C-term) - References**

Hannemann, S., et al. J. Biol. Chem. 283(41):27891-27903(2008)

Schulte, A., et al. Structure 16(9):1313-1323(2008)

Takeya, R., et al. EMBO J. 27(4):618-628(2008)

Schulte, A., et al. Acta Crystallogr. Sect. F Struct. Biol. Cryst. Commun. 63 (PT 10), 878-881 (2007) :

Sugiyama, N., et al. Mol. Cell Proteomics 6(6):1103-1109(2007)