

NKX6-1 Antibody (C-term)
Affinity Purified Rabbit Polyclonal Antibody (Pab)
Catalog # AP16589b**Specification**

NKX6-1 Antibody (C-term) - Product Information

Application	WB,E
Primary Accession	P78426
Other Accession	O35762 , O99MA9 , NP_006159.2
Reactivity	Human, Mouse
Predicted	Rat
Host	Rabbit
Clonality	Polyclonal
Isotype	Rabbit IgG
Calculated MW	37849
Antigen Region	6-1

NKX6-1 Antibody (C-term) - Additional Information**Gene ID** 4825**Other Names**

Homeobox protein Nkx-61, Homeobox protein NK-6 homolog A, NKX6-1, NKX6A

Target/Specificity

This NKX6-1 antibody is generated from rabbits immunized with a KLH conjugated synthetic peptide between 285-314 amino acids from the C-terminal region of human NKX6-1.

Dilution

WB~~1:1000

E~~Use at an assay dependent concentration.

Format

Purified polyclonal antibody supplied in PBS with 0.09% (W/V) sodium azide. This antibody is purified through a protein A column, followed by peptide affinity purification.

Storage

Maintain refrigerated at 2-8°C for up to 2 weeks. For long term storage store at -20°C in small aliquots to prevent freeze-thaw cycles.

Precautions

NKX6-1 Antibody (C-term) is for research use only and not for use in diagnostic or therapeutic procedures.

NKX6-1 Antibody (C-term) - Protein Information**Name** NKX6-1

Synonyms NKX6A

Function Transcription factor which binds to specific A/T-rich DNA sequences in the promoter regions of a number of genes. Involved in the development of insulin-producing beta cells in the islets of Langerhans at the secondary transition (By similarity). Together with NKX2-2 and IRX3 acts to restrict the generation of motor neurons to the appropriate region of the neural tube. Belongs to the class II proteins of neuronal progenitor factors, which are induced by SHH signals (By similarity).

Cellular Location

Nucleus.

Tissue Location

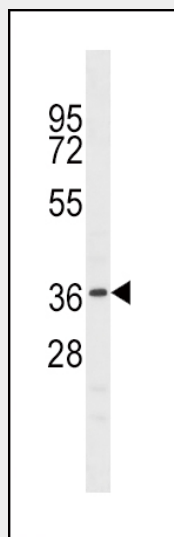
Pancreatic beta cells.

NKX6-1 Antibody (C-term) - Protocols

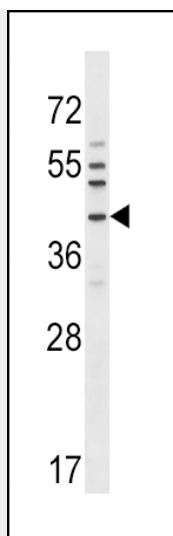
Provided below are standard protocols that you may find useful for product applications.

- [Western Blot](#)
- [Blocking Peptides](#)
- [Dot Blot](#)
- [Immunohistochemistry](#)
- [Immunofluorescence](#)
- [Immunoprecipitation](#)
- [Flow Cytometry](#)
- [Cell Culture](#)

NKX6-1 Antibody (C-term) - Images



NKX6-1 Antibody (C-term) (Cat. #AP16589b) western blot analysis in mouse liver tissue lysates (35ug/lane). This demonstrates the NKX6-1 antibody detected the NKX6-1 protein (arrow).



NKX6-1 Antibody (C-term) (Cat. #AP16589b) western blot analysis in A549 cell line lysates (35ug/lane). This demonstrates the NKX6-1 antibody detected the NKX6-1 protein (arrow).

NKX6-1 Antibody (C-term) - Background

In the pancreas, NKX6.1 is required for the development of beta cells and is a potent bifunctional transcription regulator that binds to AT-rich sequences within the promoter region of target genes lype et al. (2004) [PubMed 15056733]. [supplied by OMIM].

NKX6-1 Antibody (C-term) - References

Donelan, W., et al. J. Biol. Chem. 285(16):12181-12189(2010)
Zhu, S., et al. Dig. Dis. Sci. 54(5):996-1002(2009)
Schisler, J.C., et al. Mol. Cell. Biol. 28(10):3465-3476(2008)
Yokoi, N., et al. Diabetes 55(8):2379-2386(2006)
Hori, Y., et al. PLoS Med. 2 (4), E103 (2005) :