

**ISG20 Antibody (Center)**  
**Affinity Purified Rabbit Polyclonal Antibody (Pab)**  
**Catalog # AP16602c****Specification**

---

**ISG20 Antibody (Center) - Product Information**

Application	WB,E
Primary Accession	<a href="#">O96AZ6</a>
Other Accession	<a href="#">NP_002192.2</a>
Reactivity	Human
Host	Rabbit
Clonality	Polyclonal
Isotype	Rabbit IgG
Calculated MW	20363
Antigen Region	29-58

**ISG20 Antibody (Center) - Additional Information****Gene ID** 3669**Other Names**

Interferon-stimulated gene 20 kDa protein, Estrogen-regulated transcript 45 protein, Promyelocytic leukemia nuclear body-associated protein ISG20, ISG20, HEM45

**Target/Specificity**

This ISG20 antibody is generated from rabbits immunized with a KLH conjugated synthetic peptide between 29-58 amino acids from the Central region of human ISG20.

**Dilution**

WB~~1:1000

E~~Use at an assay dependent concentration.

**Format**

Purified polyclonal antibody supplied in PBS with 0.09% (W/V) sodium azide. This antibody is purified through a protein A column, followed by peptide affinity purification.

**Storage**

Maintain refrigerated at 2-8°C for up to 2 weeks. For long term storage store at -20°C in small aliquots to prevent freeze-thaw cycles.

**Precautions**

ISG20 Antibody (Center) is for research use only and not for use in diagnostic or therapeutic procedures.

**ISG20 Antibody (Center) - Protein Information****Name** ISG20

## Synonyms HEM45

**Function** Interferon-induced antiviral exoribonuclease that acts mainly on single-stranded RNA (PubMed:[11401564](#), PubMed:[12594219](#), PubMed:[16033969](#)). Exhibits antiviral activity against RNA viruses including hepatitis C virus (HCV), hepatitis A virus (HAV) and yellow fever virus (YFV) (PubMed:[16514659](#), PubMed:[21036379](#)). Inhibition of several viruses such as chikungunya virus (CHIKV) does not involve the degradation of viral RNAs, but rather the inhibition of translation of viral proteins (By similarity). Exerts a translational control over a large panel of non-self RNA substrates while sparing endogenous transcripts. This activity correlates with the protein's ability to localize in cytoplasmic processing bodies (PubMed:[31600344](#)). May also act as master regulator of over hundred interferon stimulated genes leading to viral genome translation inhibition (By similarity). May play additional roles in the maturation of snRNAs and rRNAs, and in ribosome biogenesis (PubMed:[16514659](#)).

## Cellular Location

Nucleus. Nucleus, nucleolus. Cytoplasm. Nucleus, Cajal body. Cytoplasm, P-body

## Tissue Location

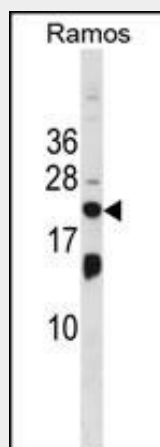
Highly expressed in peripheral blood leukocytes, spleen, thymus, colon and lung. Up regulated by E2 in estrogen receptor-positive breast cancer lines.

## ISG20 Antibody (Center) - Protocols

Provided below are standard protocols that you may find useful for product applications.

- [Western Blot](#)
- [Blocking Peptides](#)
- [Dot Blot](#)
- [Immunohistochemistry](#)
- [Immunofluorescence](#)
- [Immunoprecipitation](#)
- [Flow Cytometry](#)
- [Cell Culture](#)

## ISG20 Antibody (Center) - Images



ISG20 Antibody (Center) (Cat. #AP16602c) western blot analysis in Ramos cell line lysates (35ug/lane). This demonstrates the ISG20 antibody detected the ISG20 protein (arrow).

## ISG20 Antibody (Center) - Background

Exonuclease with specificity for single-stranded RNA and, to a lesser extent for DNA. Degrades RNA at a rate that is approximately 35-fold higher than its rate for single-stranded DNA. Involved in the antiviral function of IFN against RNA viruses.

#### **ISG20 Antibody (Center) - References**

Hao, Y., et al. J. Huazhong Univ. Sci. Technol. Med. Sci. 28(1):11-13(2008)  
Horio, T., et al. FEBS Lett. 577 (1-2), 111-116 (2004) :  
Espert, L., et al. J. Biol. Chem. 278(18):16151-16158(2003)  
Izmailova, E., et al. Nat. Med. 9(2):191-197(2003)  
Nguyen, L.H., et al. Biochemistry 40(24):7174-7179(2001)