

**BEND3 Antibody (C-term)**  
**Affinity Purified Rabbit Polyclonal Antibody (Pab)**  
**Catalog # AP16612b****Specification**

---

**BEND3 Antibody (C-term) - Product Information**

Application	WB,E
Primary Accession	<a href="#">Q5T5X7</a>
Other Accession	<a href="#">Q6PAL0</a> , <a href="#">NP_001073919.1</a>
Reactivity	Human
Predicted	Mouse
Host	Rabbit
Clonality	Polyclonal
Isotype	Rabbit IgG
Calculated MW	94475
Antigen Region	629-657

**BEND3 Antibody (C-term) - Additional Information****Gene ID** 57673**Other Names**

BEN domain-containing protein 3, BEND3, KIAA1553

**Target/Specificity**

This BEND3 antibody is generated from rabbits immunized with a KLH conjugated synthetic peptide between 629-657 amino acids from the C-terminal region of human BEND3.

**Dilution**

WB~~1:1000

E~~Use at an assay dependent concentration.

**Format**

Purified polyclonal antibody supplied in PBS with 0.09% (W/V) sodium azide. This antibody is purified through a protein A column, followed by peptide affinity purification.

**Storage**

Maintain refrigerated at 2-8°C for up to 2 weeks. For long term storage store at -20°C in small aliquots to prevent freeze-thaw cycles.

**Precautions**

BEND3 Antibody (C-term) is for research use only and not for use in diagnostic or therapeutic procedures.

**BEND3 Antibody (C-term) - Protein Information****Name** BEND3

**Synonyms** KIAA1553

**Function** Transcriptional repressor which associates with the NoRC (nucleolar remodeling complex) complex and plays a key role in repressing rDNA transcription. The sumoylated form modulates the stability of the NoRC complex component BAZ2A/TIP5 by controlling its USP21-mediated deubiquitination (PubMed:[21914818](#), PubMed:[26100909](#)). Binds to unmethylated major satellite DNA and is involved in the recruitment of the Polycomb repressive complex 2 (PRC2) to major satellites (By similarity). Stimulates the ERCC6L translocase and ATPase activities (PubMed:[28977671](#)).

**Cellular Location**

Nucleus. Nucleus, nucleolus. Note=In the nucleus, observed in heterochromatic foci containing CBX1, CBX3, CBX5 and histone H3 trimethylated at 'Lys-9'. Released from chromatin during decondensation. Association with heterochromatin does not depend on sumoylation.

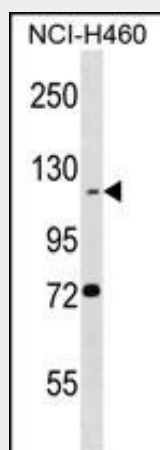
**Tissue Location**

Expressed at least in heart, kidney, liver, ovary and spleen, with highest levels in spleen and lowest in heart Expressed on the surface of T-cells.

**BEND3 Antibody (C-term) - Protocols**

Provided below are standard protocols that you may find useful for product applications.

- [Western Blot](#)
- [Blocking Peptides](#)
- [Dot Blot](#)
- [Immunohistochemistry](#)
- [Immunofluorescence](#)
- [Immunoprecipitation](#)
- [Flow Cytometry](#)
- [Cell Culture](#)

**BEND3 Antibody (C-term) - Images**

BEND3 Antibody (C-term) (Cat. #AP16612b) western blot analysis in NCI-H460 cell line lysates (35ug/lane). This demonstrates the BEND3 antibody detected the BEND3 protein (arrow).

**BEND3 Antibody (C-term) - References**

Vertegaal, A.C., et al. Mol. Cell Proteomics 5(12):2298-2310(2006)

Olsen, J.V., et al. Cell 127(3):635-648(2006)

Strausberg, R.L., et al. Proc. Natl. Acad. Sci. U.S.A. 99(26):16899-16903(2002)