

CHADL Antibody (Center)
Affinity Purified Rabbit Polyclonal Antibody (Pab)
Catalog # AP16613C**Specification**

CHADL Antibody (Center) - Product Information

Application	WB,E
Primary Accession	Q6NUI6
Other Accession	NP_612490.1
Reactivity	Human
Host	Rabbit
Clonality	Polyclonal
Isotype	Rabbit IgG
Calculated MW	82388
Antigen Region	406-434

CHADL Antibody (Center) - Additional Information**Gene ID** 150356**Other Names**

Chondroadherin-like protein, CHADL, SLRR4B

Target/Specificity

This CHADL antibody is generated from rabbits immunized with a KLH conjugated synthetic peptide between 406-434 amino acids from the Central region of human CHADL.

Dilution

WB~~1:1000

Format

Purified polyclonal antibody supplied in PBS with 0.09% (W/V) sodium azide. This antibody is purified through a protein A column, followed by peptide affinity purification.

Storage

Maintain refrigerated at 2-8°C for up to 2 weeks. For long term storage store at -20°C in small aliquots to prevent freeze-thaw cycles.

Precautions

CHADL Antibody (Center) is for research use only and not for use in diagnostic or therapeutic procedures.

CHADL Antibody (Center) - Protein Information**Name** CHADL**Synonyms** SLRR4B

Function Potential negative modulator of chondrocyte differentiation. Inhibits collagen fibrillogenesis in vitro. May influence chondrocyte's differentiation by acting on its cellular collagenous microenvironment.

Cellular Location

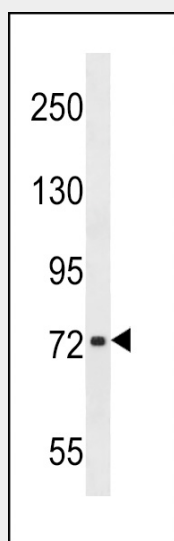
Secreted. Secreted, extracellular space, extracellular matrix {ECO:0000250|UniProtKB:E9Q7T7}

CHADL Antibody (Center) - Protocols

Provided below are standard protocols that you may find useful for product applications.

- [Western Blot](#)
- [Blocking Peptides](#)
- [Dot Blot](#)
- [Immunohistochemistry](#)
- [Immunofluorescence](#)
- [Immunoprecipitation](#)
- [Flow Cytometry](#)
- [Cell Culture](#)

CHADL Antibody (Center) - Images



CHADL Antibody (Center) (Cat. #AP16613c) western blot analysis in T47D cell line lysates (35ug/lane). This demonstrates the CHADL antibody detected the CHADL protein (arrow).

CHADL Antibody (Center) - Background

Members of the small leucine-rich proteoglycan (SLRP) family are mostly extracellular proteins that function upstream of multiple signaling cascades. They affect intracellular phosphorylation and modulate distinct pathways, such as those driven by Toll-like receptors, TGF β and receptor tyrosine kinases. As a member of the SLRP family, CHADL (Chondroadherin-like protein) is a 762 amino acid protein containing 21 LRR (leucine-rich) repeats, which promote protein-ligand interactions. Chondroadherin, a closely related protein, promotes attachment of chondrocytes, osteoblasts and fibroblasts and also plays an important role in the regulation of chondrocyte proliferation and growth. CHADL is a secreted protein that is located in the extracellular space. There are two isoforms of CHADL that exist as a result of alternative splicing events.

CHADL Antibody (Center) - References

Barbe, L., et al. Mol. Cell Proteomics 7(3):499-508(2008)