

SYNGR2 Antibody (N-term)
Affinity Purified Rabbit Polyclonal Antibody (Pab)
Catalog # AP16618a**Specification**

SYNGR2 Antibody (N-term) - Product Information

Application	WB,E
Primary Accession	O43760
Other Accession	NP_004701.1
Reactivity	Human
Host	Rabbit
Clonality	Polyclonal
Isotype	Rabbit IgG
Calculated MW	24810
Antigen Region	28-56

SYNGR2 Antibody (N-term) - Additional Information**Gene ID** 9144**Other Names**

Synaptogyrin-2, Cellugyrin, SYNGR2

Target/Specificity

This SYNGR2 antibody is generated from rabbits immunized with a KLH conjugated synthetic peptide between 28-56 amino acids from the N-terminal region of human SYNGR2.

Dilution

WB~~1:1000

Format

Purified polyclonal antibody supplied in PBS with 0.09% (W/V) sodium azide. This antibody is purified through a protein A column, followed by peptide affinity purification.

Storage

Maintain refrigerated at 2-8°C for up to 2 weeks. For long term storage store at -20°C in small aliquots to prevent freeze-thaw cycles.

Precautions

SYNGR2 Antibody (N-term) is for research use only and not for use in diagnostic or therapeutic procedures.

SYNGR2 Antibody (N-term) - Protein Information**Name** SYNGR2 ([HGNC:11499](#))

Function May play a role in regulated exocytosis. In neuronal cells, modulates the localization of synaptophysin/SYP into synaptic-like microvesicles and may therefore play a role in the formation

and/or the maturation of this vesicles. May also play a role in GLUT4 storage and transport to the plasma membrane.

Cellular Location

Cytoplasmic vesicle membrane {ECO:0000250|UniProtKB:O54980}; Multi-pass membrane protein. Cytoplasmic vesicle, secretory vesicle, synaptic vesicle membrane {ECO:0000250|UniProtKB:O54980}; Multi-pass membrane protein. Note=Localizes to cytoplasmic vesicles associated with the recycling endosomes. {ECO:0000250|UniProtKB:O54980}

Tissue Location

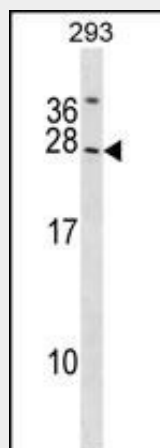
Ubiquitous; low expression in brain.

SYNGR2 Antibody (N-term) - Protocols

Provided below are standard protocols that you may find useful for product applications.

- [Western Blot](#)
- [Blocking Peptides](#)
- [Dot Blot](#)
- [Immunohistochemistry](#)
- [Immunofluorescence](#)
- [Immunoprecipitation](#)
- [Flow Cytometry](#)
- [Cell Culture](#)

SYNGR2 Antibody (N-term) - Images



SYNGR2 Antibody (N-term) (Cat. #AP16618a) western blot analysis in 293 cell line lysates (35ug/lane). This demonstrates the SYNGR2 antibody detected the SYNGR2 protein (arrow).

SYNGR2 Antibody (N-term) - Background

This gene encodes an integral membrane protein containing four transmembrane regions and a C-terminal cytoplasmic tail that is tyrosine phosphorylated. The exact function of this protein is unclear, but studies of a similar rat protein suggest that it may play a role in regulating membrane traffic in non-neuronal cells. The gene belongs to the synaptogyrin gene family. [provided by RefSeq].

SYNGR2 Antibody (N-term) - References

Clark, H.F., et al. Genome Res. 13(10):2265-2270(2003)
Kedra, D., et al. Hum. Genet. 103(2):131-141(1998)
Janz, R., et al. J. Biol. Chem. 273(5):2851-2857(1998)