

**TMED6 Antibody (Center)**  
**Affinity Purified Rabbit Polyclonal Antibody (Pab)**  
**Catalog # AP16626c****Specification**

---

**TMED6 Antibody (Center) - Product Information**

Application	WB,E
Primary Accession	<a href="#">Q8WW62</a>
Other Accession	<a href="#">NP_653277.2</a>
Reactivity	Human
Host	Rabbit
Clonality	Polyclonal
Isotype	Rabbit IgG
Calculated MW	27631
Antigen Region	125-153

**TMED6 Antibody (Center) - Additional Information****Gene ID** 146456**Other Names**

Transmembrane emp24 domain-containing protein 6, p24 family protein gamma-5, p24gamma5, TMED6

**Target/Specificity**

This TMED6 antibody is generated from rabbits immunized with a KLH conjugated synthetic peptide between 125-153 amino acids from the Central region of human TMED6.

**Dilution**

WB~~1:1000

E~~Use at an assay dependent concentration.

**Format**

Purified polyclonal antibody supplied in PBS with 0.09% (W/V) sodium azide. This antibody is purified through a protein A column, followed by peptide affinity purification.

**Storage**

Maintain refrigerated at 2-8°C for up to 2 weeks. For long term storage store at -20°C in small aliquots to prevent freeze-thaw cycles.

**Precautions**

TMED6 Antibody (Center) is for research use only and not for use in diagnostic or therapeutic procedures.

**TMED6 Antibody (Center) - Protein Information****Name** TMED6

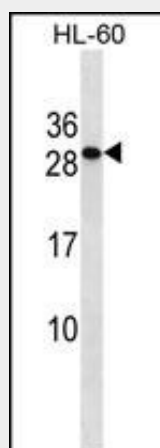
**Cellular Location**

Endoplasmic reticulum membrane; Single-pass type I membrane protein

**TMED6 Antibody (Center) - Protocols**

Provided below are standard protocols that you may find useful for product applications.

- [Western Blot](#)
- [Blocking Peptides](#)
- [Dot Blot](#)
- [Immunohistochemistry](#)
- [Immunofluorescence](#)
- [Immunoprecipitation](#)
- [Flow Cytometry](#)
- [Cell Culture](#)

**TMED6 Antibody (Center) - Images**

TMED6 Antibody (Center) (Cat. #AP16626c) western blot analysis in HL-60 cell line lysates (35ug/lane). This demonstrates the TMED6 antibody detected the TMED6 protein (arrow).

**TMED6 Antibody (Center) - Background**

TMED6 (transmembrane emp24 domain-containing protein 6) is a 240 amino acid single-pass type I membrane protein that belongs to the EMP24/GP25L family and contains one GOLD domain. The gene that encodes TMED6 contains around 8,564 bases and maps to human chromosome 16q22.1. Encoding over 900 genes and consisting of approximately 90 million base pairs, chromosome 16 makes up nearly 3% of the human genome and is associated with a variety of genetic disorders. The GAN gene is located on chromosome 16 and, when mutated, may lead to giant axonal neuropathy, a nervous system disorder characterized by increasing malfunction with growth. Alterations in the CREB gene and NOD2 gene, both of which are located on chromosome 16, result in Rubinstein-Taybi syndrome and Crohn's disease, respectively. An association with systemic lupus erythematosus and a number of other autoimmune disorders with the pericentromeric region of chromosome 16 has led to the identification of SLC5A11 as a potential autoimmune modifier.

**TMED6 Antibody (Center) - References**

Clark, H.F., et al. Genome Res. 13(10):2265-2270(2003)