

BCAS1 Antibody (N-term)
Affinity Purified Rabbit Polyclonal Antibody (Pab)
Catalog # AP16632a**Specification**

BCAS1 Antibody (N-term) - Product Information

Application	WB,E
Primary Accession	O75363
Other Accession	NP_003648.2
Reactivity	Human
Host	Rabbit
Clonality	Polyclonal
Isotype	Rabbit IgG
Calculated MW	61709
Antigen Region	1-30

BCAS1 Antibody (N-term) - Additional Information**Gene ID** 8537**Other Names**

Breast carcinoma-amplified sequence 1, Amplified and overexpressed in breast cancer, Novel amplified in breast cancer 1, BCAS1, AIBC1, NABC1

Target/Specificity

This BCAS1 antibody is generated from rabbits immunized with a KLH conjugated synthetic peptide between 1-30 amino acids from the N-terminal region of human BCAS1.

Dilution

WB~~1:1000

E~~Use at an assay dependent concentration.

Format

Purified polyclonal antibody supplied in PBS with 0.09% (W/V) sodium azide. This antibody is purified through a protein A column, followed by peptide affinity purification.

Storage

Maintain refrigerated at 2-8°C for up to 2 weeks. For long term storage store at -20°C in small aliquots to prevent freeze-thaw cycles.

Precautions

BCAS1 Antibody (N-term) is for research use only and not for use in diagnostic or therapeutic procedures.

BCAS1 Antibody (N-term) - Protein Information**Name** BCAS1

Synonyms AIBC1, NABC1

Function Required for myelination.

Cellular Location

Cytoplasm.

Tissue Location

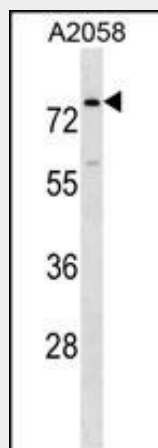
Highly expressed in the brain and, more specifically, in oligodendrocytes (at protein level). Expressed in the prostate, and at lower levels in testis, intestine and colon Overexpressed in most breast cancer cell lines and down-regulated in some colorectal tumors.

BCAS1 Antibody (N-term) - Protocols

Provided below are standard protocols that you may find useful for product applications.

- [Western Blot](#)
- [Blocking Peptides](#)
- [Dot Blot](#)
- [Immunohistochemistry](#)
- [Immunofluorescence](#)
- [Immunoprecipitation](#)
- [Flow Cytometry](#)
- [Cell Culture](#)

BCAS1 Antibody (N-term) - Images



BCAS1 Antibody (N-term) (Cat. #AP16632a) western blot analysis in A2058 cell line lysates (35ug/lane). This demonstrates the BCAS1 antibody detected the BCAS1 protein (arrow).

BCAS1 Antibody (N-term) - Background

This gene resides in a region at 20q13 which is amplified in a variety of tumor types and associated with more aggressive tumor phenotypes. Among the genes identified from this region, it was found to be highly expressed in three amplified breast cancer cell lines and in one breast tumor without amplification at 20q13.2. However, this gene is not in the common region of maximal amplification and its expression was not detected in the breast cancer cell line MCF7, in which this region is highly amplified.

Although not consistently expressed, this gene is a candidate oncogene.

BCAS1 Antibody (N-term) - References

Rose, J. Phd, et al. Mol. Med. (2010) In press :
Ewing, R.M., et al. Mol. Syst. Biol. 3, 89 (2007) :
Burmester, J.K., et al. Hum. Hered. 57(4):172-178(2004)
Beardsley, D.I., et al. Exp. Cell Res. 290(2):402-413(2003)
Deloukas, P., et al. Nature 414(6866):865-871(2001)