

RPAIN Antibody (N-term)
Affinity Purified Rabbit Polyclonal Antibody (Pab)
Catalog # AP16641A**Specification**

RPAIN Antibody (N-term) - Product Information

Application	WB,E
Primary Accession	Q86UA6
Other Accession	NP_001153715.1 , NP_001028174.2
Reactivity	Human
Host	Rabbit
Clonality	Polyclonal
Isotype	Rabbit IgG
Calculated MW	24770
Antigen Region	16-44

RPAIN Antibody (N-term) - Additional Information**Gene ID** 84268**Other Names**

RPA-interacting protein, hRIP, RPAIN, RIP

Target/Specificity

This RPAIN antibody is generated from rabbits immunized with a KLH conjugated synthetic peptide between 16-44 amino acids from the N-terminal region of human RPAIN.

Dilution

WB~~1:1000

Format

Purified polyclonal antibody supplied in PBS with 0.09% (W/V) sodium azide. This antibody is purified through a protein A column, followed by peptide affinity purification.

Storage

Maintain refrigerated at 2-8°C for up to 2 weeks. For long term storage store at -20°C in small aliquots to prevent freeze-thaw cycles.

Precautions

RPAIN Antibody (N-term) is for research use only and not for use in diagnostic or therapeutic procedures.

RPAIN Antibody (N-term) - Protein Information**Name** RPAIN**Synonyms** RIP

Function Mediates the import of RPA complex into the nucleus, possibly via some interaction with importin beta. Isoform 2 is sumoylated and mediates the localization of RPA complex into the PML body of the nucleus, thereby participating in RPA function in DNA metabolism.

Cellular Location

[Isoform 1]: Cytoplasm. Nucleus.

Tissue Location

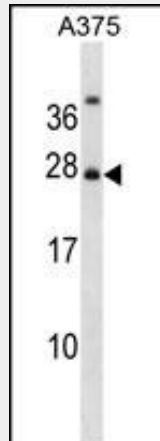
Widely expressed. Expressed in pancreas, kidney, muscle, liver, lung, placenta, brain, heart, leukocytes, colon, intestine, ovary, testis, prostate, thymus and spleen

RPAIN Antibody (N-term) - Protocols

Provided below are standard protocols that you may find useful for product applications.

- [Western Blot](#)
- [Blocking Peptides](#)
- [Dot Blot](#)
- [Immunohistochemistry](#)
- [Immunofluorescence](#)
- [Immunoprecipitation](#)
- [Flow Cytometry](#)
- [Cell Culture](#)

RPAIN Antibody (N-term) - Images



RPAIN Antibody (N-term) (Cat. #AP16641a) western blot analysis in A375 cell line lysates (35ug/lane). This demonstrates the RPAIN antibody detected the RPAIN protein (arrow).

RPAIN Antibody (N-term) - Background

RPAIN mediates the import of RPA complex into the nucleus, possibly via some interaction with importin beta. Isoform 2 is sumoylated and mediates the localization of RPA complex into the PML body of the nucleus, thereby participating in RPA function in DNA metabolism.

RPAIN Antibody (N-term) - References

Davila, S., et al. Genes Immun. 11(3):232-238(2010)
Dagle, J.M., et al. Pediatrics 123(4):1116-1123(2009)
Lamesch, P., et al. Genomics 89(3):307-315(2007)

Park, J., et al. Mol. Cell. Biol. 25(18):8202-8214(2005)
Chen, J.Z., et al. DNA Cell Biol. 24(7):464-469(2005)