

GPN1 Antibody (C-term)
Affinity Purified Rabbit Polyclonal Antibody (Pab)
Catalog # AP16654b**Specification**

GPN1 Antibody (C-term) - Product Information

| | |
|-------------------|---|
| Application | WB,E |
| Primary Accession | O9HCN4 |
| Other Accession | NP_001138520.1 , NP_001138519.1 |
| Reactivity | Human |
| Host | Rabbit |
| Clonality | Polyclonal |
| Isotype | Rabbit IgG |
| Calculated MW | 41740 |
| Antigen Region | 325-352 |

GPN1 Antibody (C-term) - Additional Information**Gene ID** 11321**Other Names**

GPN-loop GTPase 1, 365-, MBD2-interacting protein, MBDin, RNAPII-associated protein 4, XPA-binding protein 1, GPN1 {ECO:0000303|PubMed:20855544, ECO:0000312|HGNC:HGNC:17030}

Target/Specificity

This GPN1 antibody is generated from rabbits immunized with a KLH conjugated synthetic peptide between 325-352 amino acids from the C-terminal region of human GPN1.

Dilution

WB~~1:1000

Format

Purified polyclonal antibody supplied in PBS with 0.09% (W/V) sodium azide. This antibody is purified through a protein A column, followed by peptide affinity purification.

Storage

Maintain refrigerated at 2-8°C for up to 2 weeks. For long term storage store at -20°C in small aliquots to prevent freeze-thaw cycles.

Precautions

GPN1 Antibody (C-term) is for research use only and not for use in diagnostic or therapeutic procedures.

GPN1 Antibody (C-term) - Protein Information**Name** GPN1 {ECO:0000303|PubMed:20855544, ECO:0000312|HGNC:HGNC:17030}

Function Small GTPase required for proper nuclear import of RNA polymerase II (RNAPII) (PubMed:[20855544](#), PubMed:[21768307](#)). May act at an RNAP assembly step prior to nuclear import (PubMed:[21768307](#)). Forms an interface between the RNA polymerase II enzyme and chaperone/scaffolding proteins, suggesting that it is required to connect RNA polymerase II to regulators of protein complex formation (PubMed:[17643375](#)). May be involved in nuclear localization of XPA (PubMed:[11058119](#)).

Cellular Location

Cytoplasm. Nucleus Note=Shuttles between the nucleus and the cytoplasm

Tissue Location

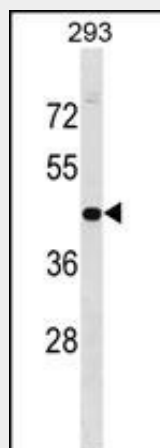
Expressed ubiquitously.

GPN1 Antibody (C-term) - Protocols

Provided below are standard protocols that you may find useful for product applications.

- [Western Blot](#)
- [Blocking Peptides](#)
- [Dot Blot](#)
- [Immunohistochemistry](#)
- [Immunofluorescence](#)
- [Immunoprecipitation](#)
- [Flow Cytometry](#)
- [Cell Culture](#)

GPN1 Antibody (C-term) - Images



GPN1 Antibody (C-term) (Cat. #AP16654b) western blot analysis in 293 cell line lysates (35ug/lane). This demonstrates the GPN1 antibody detected the GPN1 protein (arrow).

GPN1 Antibody (C-term) - Background

This gene encodes a guanosine triphosphatase enzyme. The encoded protein may play a role in DNA repair and may function in activation of transcription. Alternatively spliced transcript variants have been described.

GPN1 Antibody (C-term) - References

Lembo, F., et al. Mol. Cell. Biol. 23(5):1656-1665(2003)
Nitta, M., et al. Nucleic Acids Res. 28(21):4212-4218(2000)