

IRX5 Antibody (C-term)
Affinity Purified Rabbit Polyclonal Antibody (Pab)
Catalog # AP16657b**Specification**

IRX5 Antibody (C-term) - Product Information

Application	WB,E
Primary Accession	P78411
Other Accession	O9JKO4 , NP_005844.4
Reactivity	Human, Mouse
Host	Rabbit
Clonality	Polyclonal
Isotype	Rabbit IgG
Calculated MW	50361
Antigen Region	455-483

IRX5 Antibody (C-term) - Additional Information**Gene ID** 10265**Other Names**

Iroquois-class homeodomain protein IRX-5, Homeodomain protein IRX-2A, Homeodomain protein IRXB2, Iroquois homeobox protein 5, IRX5, IRX2A, IRXB2

Target/Specificity

This IRX5 antibody is generated from rabbits immunized with a KLH conjugated synthetic peptide between 455-483 amino acids from the C-terminal region of human IRX5.

Dilution

WB~~1:1000

E~~Use at an assay dependent concentration.

Format

Purified polyclonal antibody supplied in PBS with 0.09% (W/V) sodium azide. This antibody is purified through a protein A column, followed by peptide affinity purification.

Storage

Maintain refrigerated at 2-8°C for up to 2 weeks. For long term storage store at -20°C in small aliquots to prevent freeze-thaw cycles.

Precautions

IRX5 Antibody (C-term) is for research use only and not for use in diagnostic or therapeutic procedures.

IRX5 Antibody (C-term) - Protein Information**Name** IRX5

Synonyms IRX2A, IRXB2

Function Establishes the cardiac repolarization gradient by its repressive actions on the KCND2 potassium-channel gene. Required for retinal cone bipolar cell differentiation. May regulate contrast adaptation in the retina and control specific aspects of visual function in circuits of the mammalian retina (By similarity). Could be involved in the regulation of both the cell cycle and apoptosis in prostate cancer cells. Involved in craniofacial and gonadal development. Modulates the migration of progenitor cell populations in branchial arches and gonads by repressing CXCL12.

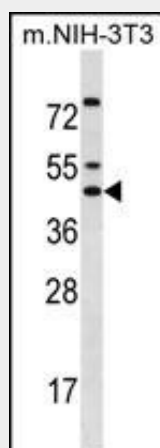
Cellular Location

Nucleus.

IRX5 Antibody (C-term) - Protocols

Provided below are standard protocols that you may find useful for product applications.

- [Western Blot](#)
- [Blocking Peptides](#)
- [Dot Blot](#)
- [Immunohistochemistry](#)
- [Immunofluorescence](#)
- [Immunoprecipitation](#)
- [Flow Cytometry](#)
- [Cell Culture](#)

IRX5 Antibody (C-term) - Images

IRX5 Antibody (C-term) (Cat. #AP16657b) western blot analysis in mouse NIH-3T3 cell line lysates (35ug/lane). This demonstrates the IRX5 antibody detected the IRX5 protein (arrow).

IRX5 Antibody (C-term) - Background

IRX5 is a member of the Iroquois homeobox gene family. Members of this family appear to play multiple roles during pattern formation of vertebrate embryos.

IRX5 Antibody (C-term) - References

Myrthue, A., et al. Clin. Cancer Res. 14(11):3562-3570(2008)
Bruneau, B.G. Med Sci (Paris) 22(3):231-232(2006)

Ogura, K., et al. Cytogenet. Cell Genet. 92 (3-4), 320-325 (2001) :
Lewis, M.T., et al. Cell Tissue Res. 296(3):549-554(1999)