

CPNE3 Antibody (C-term)
Affinity Purified Rabbit Polyclonal Antibody (Pab)
Catalog # AP16669B**Specification**

CPNE3 Antibody (C-term) - Product Information

Application	WB,E
Primary Accession	O75131
Other Accession	NP_003900.1
Reactivity	Human
Host	Rabbit
Clonality	Polyclonal
Isotype	Rabbit IgG
Calculated MW	60131
Antigen Region	507-533

CPNE3 Antibody (C-term) - Additional Information**Gene ID** 8895**Other Names**

Copine-3, Copine III, CPNE3, CPN3, KIAA0636

Target/Specificity

This CPNE3 antibody is generated from rabbits immunized with a KLH conjugated synthetic peptide between 507-533 amino acids from the C-terminal region of human CPNE3.

Dilution

WB~~1:1000

E~~Use at an assay dependent concentration.

Format

Purified polyclonal antibody supplied in PBS with 0.09% (W/V) sodium azide. This antibody is purified through a protein A column, followed by peptide affinity purification.

Storage

Maintain refrigerated at 2-8°C for up to 2 weeks. For long term storage store at -20°C in small aliquots to prevent freeze-thaw cycles.

Precautions

CPNE3 Antibody (C-term) is for research use only and not for use in diagnostic or therapeutic procedures.

CPNE3 Antibody (C-term) - Protein Information**Name** CPNE3 ([HGNC:2316](#))**Function** Calcium-dependent phospholipid-binding protein that plays a role in ERBB2-mediated

tumor cell migration in response to growth factor heregulin stimulation (PubMed:[20010870](#)).

Cellular Location

Nucleus. Cytoplasm. Cell membrane Cell junction. Cell junction, focal adhesion. Note=Associates to the membrane in a calcium-dependent manner (PubMed:20010870). Translocates to the cell membrane and the nucleus in a calcium- or growth factor heregulin- dependent manner (PubMed:20010870, PubMed:21087455). Colocalizes with the tyrosine phosphorylated ERBB2 form at cell membrane and focal adhesions in a calcium- or growth factor heregulin-dependent manner (PubMed:20010870).

Tissue Location

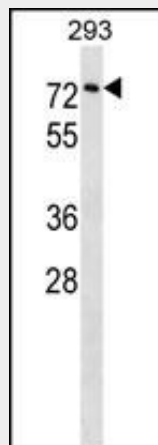
Expressed in breast and weakly in prostate and ovarian tissues (PubMed:20010870). Expressed in neutrophils (at protein level) (PubMed:12949241). Widely expressed (PubMed:11041869). Expressed in the brain. Expressed in neutrophil precursors from the bone marrow and peripheral blood (PubMed:12949241). Expressed in primary breast tumors and ovarian endometrioid adenocarcinoma (PubMed:20010870)

CPNE3 Antibody (C-term) - Protocols

Provided below are standard protocols that you may find useful for product applications.

- [Western Blot](#)
- [Blocking Peptides](#)
- [Dot Blot](#)
- [Immunohistochemistry](#)
- [Immunofluorescence](#)
- [Immunoprecipitation](#)
- [Flow Cytometry](#)
- [Cell Culture](#)

CPNE3 Antibody (C-term) - Images



CPNE3 Antibody (C-term) (Cat. #AP16669b) western blot analysis in 293 cell line lysates (35ug/lane). This demonstrates the CPNE3 antibody detected the CPNE3 protein (arrow).

CPNE3 Antibody (C-term) - Background

Calcium-dependent membrane-binding proteins may regulate molecular events at the interface of the cell membrane and cytoplasm. This gene encodes a protein which contains two type II

C2 domains in the amino-terminus and an A domain-like sequence in the carboxy-terminus. The A domain mediates interactions between integrins and extracellular ligands.

CPNE3 Antibody (C-term) - References

Heinrich, C., et al. Oncogene 29(11):1598-1610(2010)
Thomas, G., et al. Nat. Genet. 40(3):310-315(2008)
Cowland, J.B., et al. J. Leukoc. Biol. 74(3):379-388(2003)
Caudell, E.G., et al. Biochemistry 39(42):13034-13043(2000)
Creutz, C.E., et al. J. Biol. Chem. 273(3):1393-1402(1998)