

SH3BP2 Antibody (Center)
Affinity Purified Rabbit Polyclonal Antibody (Pab)
Catalog # AP16677c**Specification**

SH3BP2 Antibody (Center) - Product Information

| | |
|-------------------|-----------------------------------------------------------------|
| Application | WB,E |
| Primary Accession | P78314 |
| Other Accession | NP_001116153.1 , NP_001139327.1 |
| Reactivity | Human, Mouse |
| Host | Rabbit |
| Clonality | Polyclonal |
| Isotype | Rabbit IgG |
| Calculated MW | 62244 |
| Antigen Region | 151-180 |

SH3BP2 Antibody (Center) - Additional Information**Gene ID** 6452**Other Names**

SH3 domain-binding protein 2, 3BP-2, SH3BP2, 3BP2

Target/Specificity

This SH3BP2 antibody is generated from rabbits immunized with a KLH conjugated synthetic peptide between 151-180 amino acids from the Central region of human SH3BP2.

Dilution

WB~~1:1000

Format

Purified polyclonal antibody supplied in PBS with 0.09% (W/V) sodium azide. This antibody is purified through a protein A column, followed by peptide affinity purification.

Storage

Maintain refrigerated at 2-8°C for up to 2 weeks. For long term storage store at -20°C in small aliquots to prevent freeze-thaw cycles.

Precautions

SH3BP2 Antibody (Center) is for research use only and not for use in diagnostic or therapeutic procedures.

SH3BP2 Antibody (Center) - Protein Information**Name** SH3BP2**Synonyms** 3BP2

Function Binds differentially to the SH3 domains of certain proteins of signal transduction pathways. Binds to phosphatidylinositols; linking the hemopoietic tyrosine kinase fes to the cytoplasmic membrane in a phosphorylation dependent mechanism.

Tissue Location

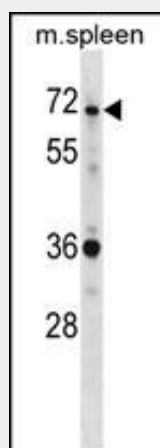
Expressed in a variety of tissues including lung, liver, skeletal muscle, kidney and pancreas

SH3BP2 Antibody (Center) - Protocols

Provided below are standard protocols that you may find useful for product applications.

- [Western Blot](#)
- [Blocking Peptides](#)
- [Dot Blot](#)
- [Immunohistochemistry](#)
- [Immunofluorescence](#)
- [Immunoprecipitation](#)
- [Flow Cytometry](#)
- [Cell Culture](#)

SH3BP2 Antibody (Center) - Images



SH3BP2 Antibody (Center) (Cat. #AP16677c) western blot analysis in mouse spleen tissue lysates (35ug/lane). This demonstrates the SH3BP2 antibody detected the SH3BP2 protein (arrow).

SH3BP2 Antibody (Center) - Background

The protein encoded by this gene has an N-terminal pleckstrin homology (PH) domain, an SH3-binding proline-rich region, and a C-terminal SH2 domain. The protein binds to the SH3 domains of several proteins including the ABL1 and SYK protein tyrosine kinases, and functions as a cytoplasmic adaptor protein to positively regulate transcriptional activity in T, natural killer (NK), and basophilic cells. Mutations in this gene result in cherubism. Multiple transcript variants encoding different isoforms have been found for this gene.

SH3BP2 Antibody (Center) - References

Lietman, S.A., et al. J. Orthop. Res. 28(11):1425-1430(2010)

Rose, J.E., et al. Mol. Med. 16 (7-8), 247-253 (2010) :
Davila, S., et al. Genes Immun. 11(3):232-238(2010)
Amaral, F.R., et al. J. Oral Pathol. Med. 39(3):269-274(2010)
Shukla, U., et al. J. Biol. Chem. 284(49):33719-33728(2009)