

ACRC Antibody (C-term)
Affinity Purified Rabbit Polyclonal Antibody (Pab)
Catalog # AP16679b

Specification

ACRC Antibody (C-term) - Product Information

Application	WB,E
Primary Accession	O96QF7
Other Accession	NP_443189.1
Reactivity	Human
Host	Rabbit
Clonality	Polyclonal
Isotype	Rabbit IgG
Calculated MW	76112
Antigen Region	599-628

ACRC Antibody (C-term) - Additional Information

Gene ID 93953

Other Names

Acidic repeat-containing protein, ACRC

Target/Specificity

This ACRC antibody is generated from rabbits immunized with a KLH conjugated synthetic peptide between 599-628 amino acids from the C-terminal region of human ACRC.

Dilution

WB~~1:1000

Format

Purified polyclonal antibody supplied in PBS with 0.09% (W/V) sodium azide. This antibody is purified through a protein A column, followed by peptide affinity purification.

Storage

Maintain refrigerated at 2-8°C for up to 2 weeks. For long term storage store at -20°C in small aliquots to prevent freeze-thaw cycles.

Precautions

ACRC Antibody (C-term) is for research use only and not for use in diagnostic or therapeutic procedures.

ACRC Antibody (C-term) - Protein Information

Name GCNA ([HGNC:15805](#))

Function May play a role in DNA-protein cross-links (DPCs) clearance through a SUMO-dependent recruitment to sites of DPCs, ensuring the genomic stability by protecting germ cells and early

embryos from various sources of damage (PubMed:[30914427](#)). Can resolve the topoisomerase II (TOP2A) DPCs (By similarity).

Cellular Location

Nucleus. Nucleus, PML body. Chromosome {ECO:0000250|UniProtKB:A0A1D9BZF0}.
Note=Co-localizes with SUMO2 at PML bodies in all interphase cells (PubMed:30914427). Localizes on condensed chromosomes in spermatocytes in G2 and M during meiotic prophase (By similarity). {ECO:0000250|UniProtKB:A0A1D9BZF0, ECO:0000269|PubMed:30914427}

Tissue Location

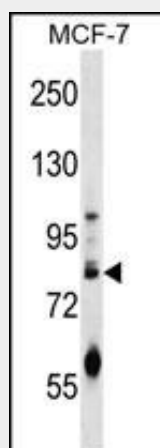
Expressed in germ cells of the testis (at protein level) (PubMed:27718356). Detected in skeletal muscle, liver, kidney, pancreas, heart, lung and brain (PubMed:11714101). Expressed throughout spermatogenesis, from spermatogonia to elongated spermatids, in normal adult testis (at protein level) (PubMed:33963445)

ACRC Antibody (C-term) - Protocols

Provided below are standard protocols that you may find useful for product applications.

- [Western Blot](#)
- [Blocking Peptides](#)
- [Dot Blot](#)
- [Immunohistochemistry](#)
- [Immunofluorescence](#)
- [Immunoprecipitation](#)
- [Flow Cytometry](#)
- [Cell Culture](#)

ACRC Antibody (C-term) - Images



ACRC Antibody (C-term) (Cat. #AP16679b) western blot analysis in MCF-7 cell line lysates (35ug/lane). This demonstrates the ACRC antibody detected the ACRC protein (arrow).

ACRC Antibody (C-term) - Background

ACRC belongs to the serine-aspartate repeat-containing protein (SDr) family. It is detected in skeletal muscle, liver, kidney, pancreas, heart, lung and brain.

ACRC Antibody (C-term) - References

Kimura, K., et al. Genome Res. 16(1):55-65(2006)
Strausberg, R.L., et al. Proc. Natl. Acad. Sci. U.S.A. 99(26):16899-16903(2002)
Nolte, D., et al. Neurogenetics 3(4):207-213(2001)