

**OR10S1 Antibody (C-term)**  
**Affinity Purified Rabbit Polyclonal Antibody (Pab)**  
**Catalog # AP16691b****Specification**

---

**OR10S1 Antibody (C-term) - Product Information**

Application	WB,E
Primary Accession	<a href="#">Q8NGN2</a>
Other Accession	<a href="#">NP_001004474.1</a>
Reactivity	Human
Host	Rabbit
Clonality	Polyclonal
Isotype	Rabbit IgG
Calculated MW	36501
Antigen Region	226-254

**OR10S1 Antibody (C-term) - Additional Information****Gene ID** 219873**Other Names**

Olfactory receptor 10S1, Olfactory receptor OR11-279, OR10S1

**Target/Specificity**

This OR10S1 antibody is generated from rabbits immunized with a KLH conjugated synthetic peptide between 226-254 amino acids from the C-terminal region of human OR10S1.

**Dilution**

WB~~1:1000

E~~Use at an assay dependent concentration.

**Format**

Purified polyclonal antibody supplied in PBS with 0.09% (W/V) sodium azide. This antibody is purified through a protein A column, followed by peptide affinity purification.

**Storage**

Maintain refrigerated at 2-8°C for up to 2 weeks. For long term storage store at -20°C in small aliquots to prevent freeze-thaw cycles.

**Precautions**

OR10S1 Antibody (C-term) is for research use only and not for use in diagnostic or therapeutic procedures.

**OR10S1 Antibody (C-term) - Protein Information****Name** OR10S1**Function** Odorant receptor.

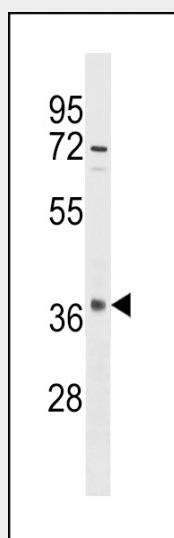
**Cellular Location**

Cell membrane; Multi-pass membrane protein.

**OR10S1 Antibody (C-term) - Protocols**

Provided below are standard protocols that you may find useful for product applications.

- [Western Blot](#)
- [Blocking Peptides](#)
- [Dot Blot](#)
- [Immunohistochemistry](#)
- [Immunofluorescence](#)
- [Immunoprecipitation](#)
- [Flow Cytometry](#)
- [Cell Culture](#)

**OR10S1 Antibody (C-term) - Images**

OR10S1 Antibody (C-term) (Cat. #AP16691b) western blot analysis in HeLa cell line lysates (35ug/lane). This demonstrates the OR10S1 antibody detected the OR10S1 protein (arrow).

**OR10S1 Antibody (C-term) - Background**

Olfactory receptors interact with odorant molecules in the nose, to initiate a neuronal response that triggers the perception of a smell. The olfactory receptor proteins are members of a large family of G-protein-coupled receptors (GPCR) arising from single coding-exon genes. Olfactory receptors share a 7-transmembrane domain structure with many neurotransmitter and hormone receptors and are responsible for the recognition and G protein-mediated transduction of odorant signals. The olfactory receptor gene family is the largest in the genome. The nomenclature assigned to the olfactory receptor genes and proteins for this organism is independent of other organisms.

**OR10S1 Antibody (C-term) - References**

Malnic, B., et al. Proc. Natl. Acad. Sci. U.S.A. 101(8):2584-2589(2004)  
Fuchs, T., et al. Genomics 80(3):295-302(2002)