

MED16 Antibody (Center)
Affinity Purified Rabbit Polyclonal Antibody (Pab)
Catalog # AP16692c**Specification**

MED16 Antibody (Center) - Product Information

Application	WB,E
Primary Accession	O9Y2X0
Other Accession	NP_005472.2
Reactivity	Human
Host	Rabbit
Clonality	Polyclonal
Isotype	Rabbit IgG
Calculated MW	96793
Antigen Region	253-281

MED16 Antibody (Center) - Additional Information**Gene ID** 10025**Other Names**

Mediator of RNA polymerase II transcription subunit 16, Mediator complex subunit 16, Thyroid hormone receptor-associated protein 5, Thyroid hormone receptor-associated protein complex 95 kDa component, Trap95, Vitamin D3 receptor-interacting protein complex 92 kDa component, DRIP92, MED16, DRIP92 {ECO:0000312|EMBL:AAD310871}, THRAP5

Target/Specificity

This MED16 antibody is generated from rabbits immunized with a KLH conjugated synthetic peptide between 253-281 amino acids from the Central region of human MED16.

Dilution

WB~~1:1000

E~~Use at an assay dependent concentration.

Format

Purified polyclonal antibody supplied in PBS with 0.09% (W/V) sodium azide. This antibody is purified through a protein A column, followed by peptide affinity purification.

Storage

Maintain refrigerated at 2-8°C for up to 2 weeks. For long term storage store at -20°C in small aliquots to prevent freeze-thaw cycles.

Precautions

MED16 Antibody (Center) is for research use only and not for use in diagnostic or therapeutic procedures.

MED16 Antibody (Center) - Protein Information

Name MED16

Synonyms DRIP92 {ECO:0000312|EMBL:AAD31087.1}, TH

Function Component of the Mediator complex, a coactivator involved in the regulated transcription of nearly all RNA polymerase II-dependent genes. Mediator functions as a bridge to convey information from gene-specific regulatory proteins to the basal RNA polymerase II transcription machinery. Mediator is recruited to promoters by direct interactions with regulatory proteins and serves as a scaffold for the assembly of a functional preinitiation complex with RNA polymerase II and the general transcription factors.

Cellular Location

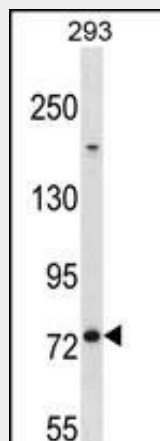
Nucleus.

MED16 Antibody (Center) - Protocols

Provided below are standard protocols that you may find useful for product applications.

- [Western Blot](#)
- [Blocking Peptides](#)
- [Dot Blot](#)
- [Immunohistochemistry](#)
- [Immunofluorescence](#)
- [Immunoprecipitation](#)
- [Flow Cytometry](#)
- [Cell Culture](#)

MED16 Antibody (Center) - Images



MED16 Antibody (Center) (Cat. #AP16692c) western blot analysis in 293 cell line lysates (35ug/lane). This demonstrates the MED16 antibody detected the MED16 protein (arrow).

MED16 Antibody (Center) - Background

Component of the Mediator complex, a coactivator involved in the regulated transcription of nearly all RNA polymerase II-dependent genes. Mediator functions as a bridge to convey information from gene-specific regulatory proteins to the basal RNA polymerase II transcription machinery. Mediator is recruited to promoters by direct interactions with regulatory proteins and serves as a scaffold for the assembly of a functional preinitiation complex with RNA polymerase II and the general transcription factors.

MED16 Antibody (Center) - References

Sato, S., et al. Mol. Cell 14(5):685-691(2004)
Tomomori-Sato, C., et al. J. Biol. Chem. 279(7):5846-5851(2004)
Wang, Q., et al. J. Biol. Chem. 277(45):42852-42858(2002)
Kang, Y.K., et al. Proc. Natl. Acad. Sci. U.S.A. 99(5):2642-2647(2002)
Suzuki, Y., et al. Genome Res. 11(5):677-684(2001)