

**MAD2L1BP Antibody (N-term)**  
**Affinity Purified Rabbit Polyclonal Antibody (Pab)**  
**Catalog # AP16694a****Specification**

---

**MAD2L1BP Antibody (N-term) - Product Information**

Application	WB,E
Primary Accession	<a href="#">Q15013</a>
Other Accession	<a href="#">NP_055443.1</a> , <a href="#">NP_001003690.1</a>
Reactivity	Human
Host	Rabbit
Clonality	Polyclonal
Isotype	Rabbit IgG
Calculated MW	31052
Antigen Region	1-30

**MAD2L1BP Antibody (N-term) - Additional Information****Gene ID** 9587**Other Names**

MAD2L1-binding protein, Caught by MAD2 protein, MAD2L1BP, CMT2, KIAA0110

**Target/Specificity**

This MAD2L1BP antibody is generated from rabbits immunized with a KLH conjugated synthetic peptide between 1-30 amino acids from the N-terminal region of human MAD2L1BP.

**Dilution**

WB~~1:1000

E~~Use at an assay dependent concentration.

**Format**

Purified polyclonal antibody supplied in PBS with 0.09% (W/V) sodium azide. This antibody is purified through a protein A column, followed by peptide affinity purification.

**Storage**

Maintain refrigerated at 2-8°C for up to 2 weeks. For long term storage store at -20°C in small aliquots to prevent freeze-thaw cycles.

**Precautions**

MAD2L1BP Antibody (N-term) is for research use only and not for use in diagnostic or therapeutic procedures.

**MAD2L1BP Antibody (N-term) - Protein Information****Name** MAD2L1BP**Synonyms** CMT2, KIAA0110

**Function** May function to silence the spindle checkpoint and allow mitosis to proceed through anaphase by binding MAD2L1 after it has become dissociated from the MAD2L1-CDC20 complex.

**Cellular Location**

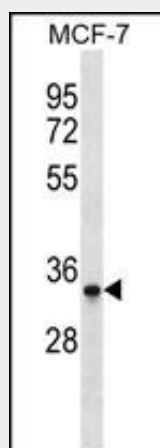
Nucleus. Cytoplasm, cytoskeleton, spindle. Note=During early mitosis, unevenly distributed throughout the nucleoplasm. From metaphase to anaphase, concentrated on the spindle

**MAD2L1BP Antibody (N-term) - Protocols**

Provided below are standard protocols that you may find useful for product applications.

- [Western Blot](#)
- [Blocking Peptides](#)
- [Dot Blot](#)
- [Immunohistochemistry](#)
- [Immunofluorescence](#)
- [Immunoprecipitation](#)
- [Flow Cytometry](#)
- [Cell Culture](#)

**MAD2L1BP Antibody (N-term) - Images**



MAD2L1BP Antibody (N-term) (Cat. #AP16694a) western blot analysis in MCF-7 cell line lysates (35ug/lane). This demonstrates the MAD2L1BP antibody detected the MAD2L1BP protein (arrow).

**MAD2L1BP Antibody (N-term) - Background**

The protein encoded by this gene was identified as a binding protein of the MAD2 mitotic arrest deficient-like 1 (MAD2/MAD2L1). MAD2 is a key component of the spindle checkpoint that delays the onset of anaphase until all the kinetochores are attached to the spindle. This protein may interact with the spindle checkpoint and coordinate cell cycle events in late mitosis. Alternatively spliced transcript variants encoding distinct isoforms have been observed.

**MAD2L1BP Antibody (N-term) - References**

Yun, M., et al. Mol. Cancer Res. 7(3):371-382(2009)  
Venkatesan, K., et al. Nat. Methods 6(1):83-90(2009)

Yang, M., et al. Cell 131(4):744-755(2007)  
Yun, M.Y., et al. Exp. Mol. Med. 39(4):508-513(2007)  
Matsuoka, S., et al. Science 316(5828):1160-1166(2007)