

ZBTB38 Antibody (N-term)
Affinity Purified Rabbit Polyclonal Antibody (Pab)
Catalog # AP16697a**Specification**

ZBTB38 Antibody (N-term) - Product Information

Application	WB,E
Primary Accession	Q8NAP3
Other Accession	NP_001073881.2
Reactivity	Human
Host	Rabbit
Clonality	Polyclonal
Isotype	Rabbit IgG
Calculated MW	134257
Antigen Region	133-161

ZBTB38 Antibody (N-term) - Additional Information**Gene ID** 253461**Other Names**

Zinc finger and BTB domain-containing protein 38, ZBTB38 (http://www.genenames.org/cgi-bin/gene_symbol_report?hgnc_id=26636)
target="_blank">HGNC:26636)

Target/Specificity

This ZBTB38 antibody is generated from rabbits immunized with a KLH conjugated synthetic peptide between 133-161 amino acids from the N-terminal region of human ZBTB38.

Dilution

WB~~1:1000

Format

Purified polyclonal antibody supplied in PBS with 0.09% (W/V) sodium azide. This antibody is purified through a protein A column, followed by peptide affinity purification.

Storage

Maintain refrigerated at 2-8°C for up to 2 weeks. For long term storage store at -20°C in small aliquots to prevent freeze-thaw cycles.

Precautions

ZBTB38 Antibody (N-term) is for research use only and not for use in diagnostic or therapeutic procedures.

ZBTB38 Antibody (N-term) - Protein Information**Name** ZBTB38 ([HGNC:26636](#))

Function Transcriptional regulator with bimodal DNA-binding specificity. Binds with a higher affinity to methylated CpG dinucleotides in the consensus sequence 5'-CGCG-3' but can also bind to E-box elements (5'-CACGTG-3'). Can also bind specifically to a single methyl-CpG pair. Represses transcription in a methyl-CpG-dependent manner (PubMed:[16354688](#)). Plays an important role in regulating DNA replication and common fragile sites (CFS) stability in a RBBP6- and MCM10-dependent manner; represses expression of MCM10 which plays an important role in DNA-replication (PubMed:[24726359](#)). Acts as a transcriptional activator. May be involved in the differentiation and/or survival of late postmitotic neurons (By similarity).

Cellular Location

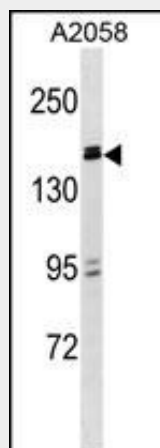
Nucleus. Chromosome. Note=Localizes to chromocenters

ZBTB38 Antibody (N-term) - Protocols

Provided below are standard protocols that you may find useful for product applications.

- [Western Blot](#)
- [Blocking Peptides](#)
- [Dot Blot](#)
- [Immunohistochemistry](#)
- [Immunofluorescence](#)
- [Immunoprecipitation](#)
- [Flow Cytometry](#)
- [Cell Culture](#)

ZBTB38 Antibody (N-term) - Images



ZBTB38 Antibody (N-term) (Cat. #AP16697a) western blot analysis in A2058 cell line lysates (35ug/lane). This demonstrates the ZBTB38 antibody detected the ZBTB38 protein (arrow).

ZBTB38 Antibody (N-term) - Background

The protein encoded by this gene is a zinc finger transcriptional activator that binds methylated DNA. The encoded protein can form homodimers or heterodimers through the zinc finger domains. In mouse, inhibition of this protein has been associated with apoptosis in some cell types.

ZBTB38 Antibody (N-term) - References

Okada, Y., et al. Hum. Mol. Genet. 19(11):2303-2312(2010)
Kim, J.J., et al. J. Hum. Genet. 55(1):27-31(2010)
Zhao, J., et al. BMC Med. Genet. 11, 96 (2010) :
Cho, Y.S., et al. Nat. Genet. 41(5):527-534(2009)
Soranzo, N., et al. PLoS Genet. 5 (4), E1000445 (2009) :