

ZNF541 Antibody (Center)
Affinity Purified Rabbit Polyclonal Antibody (Pab)
Catalog # AP16706c**Specification**

ZNF541 Antibody (Center) - Product Information

Application	WB,E
Primary Accession	O9H0D2
Other Accession	O4R2Z8 , NP_001094889.1
Reactivity	Human
Predicted	Monkey
Host	Rabbit
Clonality	Polyclonal
Isotype	Rabbit IgG
Calculated MW	145587
Antigen Region	737-765

ZNF541 Antibody (Center) - Additional Information**Gene ID** 84215**Other Names**

Zinc finger protein 541, ZNF541

Target/Specificity

This ZNF541 antibody is generated from rabbits immunized with a KLH conjugated synthetic peptide between 737-765 amino acids from the Central region of human ZNF541.

Dilution

WB~~1:1000

E~~Use at an assay dependent concentration.

Format

Purified polyclonal antibody supplied in PBS with 0.09% (W/V) sodium azide. This antibody is purified through a protein A column, followed by peptide affinity purification.

Storage

Maintain refrigerated at 2-8°C for up to 2 weeks. For long term storage store at -20°C in small aliquots to prevent freeze-thaw cycles.

Precautions

ZNF541 Antibody (Center) is for research use only and not for use in diagnostic or therapeutic procedures.

ZNF541 Antibody (Center) - Protein Information**Name** ZNF541

Function Transcription regulator which is essential for male fertility and for the completion of meiotic prophase in spermatocytes. Regulates progression of the pachytene stage of meiotic prophase by activating the expression of genes involved in meiosis during spermatogenesis. Maintains the repression of pre-pachytene transcriptional programs, including meiotic double-strand breaks (DSB) formation genes in pachytene spermatocytes and suppresses aberrant DSB formation after mid-pachytene, thus ensuring meiosis progression.

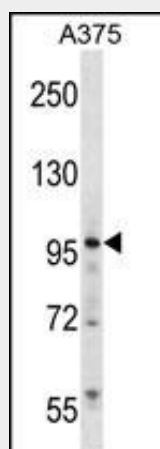
Cellular Location

Nucleus {ECO:0000250|UniProtKB:Q0GGX2, ECO:0000255|PROSITE-ProRule:PRU00512, ECO:0000255|PROSITE- ProRule:PRU00624}

ZNF541 Antibody (Center) - Protocols

Provided below are standard protocols that you may find useful for product applications.

- [Western Blot](#)
- [Blocking Peptides](#)
- [Dot Blot](#)
- [Immunohistochemistry](#)
- [Immunofluorescence](#)
- [Immunoprecipitation](#)
- [Flow Cytometry](#)
- [Cell Culture](#)

ZNF541 Antibody (Center) - Images

ZNF541 Antibody (Center) (Cat. #AP16706c) western blot analysis in A375 cell line lysates (35ug/lane). This demonstrates the ZNF541 antibody detected the ZNF541 protein (arrow).

ZNF541 Antibody (Center) - Background

Component of some chromatin remodeling multiprotein complex that plays a role during spermatogenesis (By similarity).

ZNF541 Antibody (Center) - References

Gerhard, D.S., et al. Genome Res. 14 (10B), 2121-2127 (2004) :