

**SNX15 Antibody (C-term)**  
**Affinity Purified Rabbit Polyclonal Antibody (Pab)**  
**Catalog # AP16711b****Specification**

---

**SNX15 Antibody (C-term) - Product Information**

Application	WB,E
Primary Accession	<a href="#">O9NRS6</a>
Other Accession	<a href="#">NP_037438.2</a> , <a href="#">NP_680086.2</a>
Reactivity	Human
Host	Rabbit
Clonality	Polyclonal
Isotype	Rabbit IgG
Calculated MW	38291
Antigen Region	223-251

**SNX15 Antibody (C-term) - Additional Information****Gene ID** 29907**Other Names**

Sorting nexin-15, SNX15

**Target/Specificity**

This SNX15 antibody is generated from rabbits immunized with a KLH conjugated synthetic peptide between 223-251 amino acids from the C-terminal region of human SNX15.

**Dilution**

WB~~1:1000

E~~Use at an assay dependent concentration.

**Format**

Purified polyclonal antibody supplied in PBS with 0.09% (W/V) sodium azide. This antibody is purified through a protein A column, followed by peptide affinity purification.

**Storage**

Maintain refrigerated at 2-8°C for up to 2 weeks. For long term storage store at -20°C in small aliquots to prevent freeze-thaw cycles.

**Precautions**

SNX15 Antibody (C-term) is for research use only and not for use in diagnostic or therapeutic procedures.

**SNX15 Antibody (C-term) - Protein Information****Name** SNX15**Function** May be involved in several stages of intracellular trafficking. Overexpression of SNX15

disrupts the normal trafficking of proteins from the plasma membrane to recycling endosomes or the TGN.

**Cellular Location**

Cytoplasm. Membrane; Peripheral membrane protein; Cytoplasmic side. Cytoplasmic vesicle membrane; Peripheral membrane protein; Cytoplasmic side

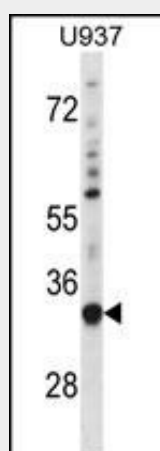
**Tissue Location**

Widely expressed..

**SNX15 Antibody (C-term) - Protocols**

Provided below are standard protocols that you may find useful for product applications.

- [Western Blot](#)
- [Blocking Peptides](#)
- [Dot Blot](#)
- [Immunohistochemistry](#)
- [Immunofluorescence](#)
- [Immunoprecipitation](#)
- [Flow Cytometry](#)
- [Cell Culture](#)

**SNX15 Antibody (C-term) - Images**

SNX15 Antibody (C-term) (Cat. #AP16711b) western blot analysis in U937 cell line lysates (35ug/lane). This demonstrates the SNX15 antibody detected the SNX15 protein (arrow).

**SNX15 Antibody (C-term) - Background**

This gene encodes a member of the sorting nexin family. Members of this family contain a phox (PX) domain, which is a phosphoinositide binding domain, and are involved in intracellular trafficking. Overexpression of this gene results in a decrease in the processing of insulin and hepatocyte growth factor receptors to their mature subunits. This decrease is caused by the mislocalization of furin, the endoprotease responsible for cleavage of insulin and hepatocyte growth factor receptors. This protein is involved in endosomal trafficking from the plasma membrane to recycling endosomes or the trans-Golgi network. This gene encodes

two transcript variants encoding distinct isoforms. [provided by RefSeq].

#### **SNX15 Antibody (C-term) - References**

Venter, J.C., et al. Science 291(5507):1304-1351(2001)  
Phillips, S.A., et al. J. Biol. Chem. 276(7):5074-5084(2001)  
Barr, V.A., et al. Traffic 1(11):904-916(2000)