

**USP17L2 Antibody (C-term)**  
**Affinity Purified Rabbit Polyclonal Antibody (Pab)**  
**Catalog # AP16721b**

**Specification**

---

**USP17L2 Antibody (C-term) - Product Information**

Application	WB,E
Primary Accession	<a href="#">Q6R6M4</a>
Other Accession	<a href="#">NP_958804.2</a>
Reactivity	Human
Host	Rabbit
Clonality	Polyclonal
Isotype	Rabbit IgG
Antigen Region	476-503

**USP17L2 Antibody (C-term) - Additional Information**

**Gene ID** 377630

**Other Names**

Ubiquitin carboxyl-terminal hydrolase 17, USP17, Deubiquitinating enzyme 17-like protein 2, Deubiquitinating protein 3, DUB-3, Ubiquitin carboxyl-terminal hydrolase 17-like protein 2, Ubiquitin thioesterase 17-like protein 2, Ubiquitin-specific-processing protease 17-like protein 2, USP17L2

**Target/Specificity**

This USP17L2 antibody is generated from rabbits immunized with a KLH conjugated synthetic peptide between 476-503 amino acids from the C-terminal region of human USP17L2.

**Dilution**

WB~~1:1000

E~~Use at an assay dependent concentration.

**Format**

Purified polyclonal antibody supplied in PBS with 0.09% (W/V) sodium azide. This antibody is purified through a protein A column, followed by peptide affinity purification.

**Storage**

Maintain refrigerated at 2-8°C for up to 2 weeks. For long term storage store at -20°C in small aliquots to prevent freeze-thaw cycles.

**Precautions**

USP17L2 Antibody (C-term) is for research use only and not for use in diagnostic or therapeutic procedures.

**USP17L2 Antibody (C-term) - Protein Information**

**Name** USP17L2

**Function** Deubiquitinating enzyme that removes conjugated ubiquitin from specific proteins to regulate different cellular processes. Regulates cell proliferation by deubiquitinating and inhibiting RCE1 thereby controlling the small GTPases NRAS and HRAS localization and activation. In parallel, mediates deubiquitination of CDC25A, preventing CDC25A degradation by the proteasome during the G1/S and G2/M phases promoting cell-cycle progression. Also regulates cell proliferation and apoptosis through deubiquitination of SUDS3 a regulator of histone deacetylation. Through activation of the Rho family GTPases RAC1A, CDC42 and RHOA, regulates cell migration. Through the cleavage of 'Lys-48'- and 'Lys-63'-linked polyubiquitin chains of the cytoplasmic innate immune receptors RIGI and IFIH1 stimulates the cellular response to viral infection.

**Cellular Location**

Nucleus. Endoplasmic reticulum

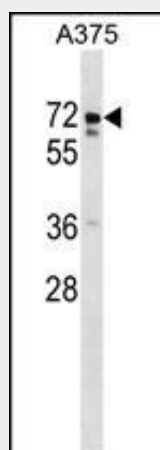
**Tissue Location**

Broadly expressed..

**USP17L2 Antibody (C-term) - Protocols**

Provided below are standard protocols that you may find useful for product applications.

- [Western Blot](#)
- [Blocking Peptides](#)
- [Dot Blot](#)
- [Immunohistochemistry](#)
- [Immunofluorescence](#)
- [Immunoprecipitation](#)
- [Flow Cytometry](#)
- [Cell Culture](#)

**USP17L2 Antibody (C-term) - Images**

USP17L2 Antibody (C-term) (Cat. #AP16721b) western blot analysis in A375 cell line lysates (35ug/lane). This demonstrates the USP17L2 antibody detected the USP17L2 protein (arrow).

**USP17L2 Antibody (C-term) - Background**

DUB3 is a member of the ubiquitin processing protease (UBP) subfamily of deubiquitinating enzymes. See USP1 (MIM 603478) for background information.

### **USP17L2 Antibody (C-term) - References**

Pereg, Y., et al. Nat. Cell Biol. 12(4):400-406(2010)

Alkan, C., et al. Nat. Genet. 41(10):1061-1067(2009)

Burrows, J.F., et al. J. Biol. Chem. 279(14):13993-14000(2004)