

PRDM8 Antibody (N-term)
Affinity Purified Rabbit Polyclonal Antibody (Pab)
Catalog # AP16736a**Specification**

PRDM8 Antibody (N-term) - Product Information

Application	WB,E
Primary Accession	O9NOV8
Other Accession	O8BZ97 , NP_001092873.1 , NP_064611.3
Reactivity	Human
Predicted	Mouse
Host	Rabbit
Clonality	Polyclonal
Isotype	Rabbit IgG
Calculated MW	71663
Antigen Region	75-102

PRDM8 Antibody (N-term) - Additional Information**Gene ID** 56978**Other Names**

PR domain zinc finger protein 8, 211-, PR domain-containing protein 8, PRDM8, PFM5

Target/Specificity

This PRDM8 antibody is generated from rabbits immunized with a KLH conjugated synthetic peptide between 75-102 amino acids from the N-terminal region of human PRDM8.

Dilution

WB~~1:1000

Format

Purified polyclonal antibody supplied in PBS with 0.09% (W/V) sodium azide. This antibody is purified through a protein A column, followed by peptide affinity purification.

Storage

Maintain refrigerated at 2-8°C for up to 2 weeks. For long term storage store at -20°C in small aliquots to prevent freeze-thaw cycles.

Precautions

PRDM8 Antibody (N-term) is for research use only and not for use in diagnostic or therapeutic procedures.

PRDM8 Antibody (N-term) - Protein Information**Name** PRDM8**Synonyms** PFM5

Function Probable histone methyltransferase, preferentially acting on 'Lys-9' of histone H3 (By similarity). Involved in the control of steroidogenesis through transcriptional repression of steroidogenesis marker genes such as CYP17A1 and LHCGR (By similarity). Forms with BHLHE22 a transcriptional repressor complex controlling genes involved in neural development and neuronal differentiation (By similarity). In the retina, it is required for rod bipolar and type 2 OFF-cone bipolar cell survival (By similarity).

Cellular Location

Nucleus.

Tissue Location

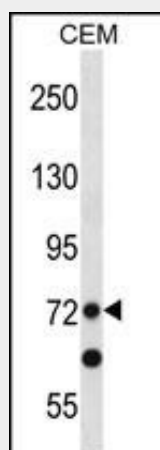
Expressed in brain, heart, skeletal muscle, testes, prostate.

PRDM8 Antibody (N-term) - Protocols

Provided below are standard protocols that you may find useful for product applications.

- [Western Blot](#)
- [Blocking Peptides](#)
- [Dot Blot](#)
- [Immunohistochemistry](#)
- [Immunofluorescence](#)
- [Immunoprecipitation](#)
- [Flow Cytometry](#)
- [Cell Culture](#)

PRDM8 Antibody (N-term) - Images



PRDM8 Antibody (N-term) (Cat. #AP16736a) western blot analysis in CEM cell line lysates (35ug/lane). This demonstrates the PRDM8 antibody detected the PRDM8 protein (arrow).

PRDM8 Antibody (N-term) - Background

PRDM8 may be involved in transcriptional regulation.

PRDM8 Antibody (N-term) - References

Newton-Cheh, C., et al. Nat. Genet. (2009) In press :
Xiao, B., et al. Curr. Opin. Struct. Biol. 13(6):699-705(2003)
Jiang, G.L., et al. Histo. Histopathol. 15(1):109-117(2000)